

LOCAL ORIGINS IMPART CONSERVED BONE TYPE-RELATED DIFFERENCES IN HUMAN OSTEOBLAST BEHAVIOUR

M. Shah^{1*}, V. Gburcik¹, P. Reilly², R.A. Sankey², R.J. Emery², C.E. Clarkin³ and A.A Pitsillides¹

¹Department of Comparative Biomedical Sciences, Royal Veterinary College, London, NW1 0TU, UK

²Department of Surgery and Cancer, Faculty of Medicine, Imperial College London, SW7 1AZ, UK

³Centre for Biological Sciences, University of Southampton, Southampton, SO16 6YD. UK

Abstract

Osteogenic behaviour of osteoblasts from trabecular, cortical and subchondral bone were examined to determine any bone type-selective differences in samples from both osteoarthritic (OA) and osteoporotic (OP) patients. Cell growth, differentiation; alkaline phosphatase (TNAP) mRNA and activity, Runt-related transcription factor-2 (*RUNX2*), SP7-transcription factor (*SP7*), bone sialoprotein-II (*BSP-II*), osteocalcin/bone gamma-carboxyglutamate (*BGLAP*), osteoprotegerin (OPG, *TNFRSF11B*), receptor activator of nuclear factor- κ B ligand (RANKL, *TNFSF11*) mRNA levels and proangiogenic vascular endothelial growth factor-A (*VEGF-A*) mRNA and protein release were assessed in osteoblasts from paired humeral head samples from age-matched, human OA/OP ($n = 5/4$) patients. Initial outgrowth and increase in cell number were significantly faster ($p < 0.01$) in subchondral and cortical than trabecular osteoblasts, in OA and OP, and this bone type-related differences were conserved despite consistently faster growth in OA. *RUNX2/SP7* levels and *TNAP* mRNA and protein activity were, however, greater in trabecular than subchondral and cortical osteoblasts in OA and OP. *BSP-II* levels were significantly greater in trabecular and lowest in cortical osteoblasts in both OA and OP. In contrast, *BGLAP* levels showed divergent bone type-selective behaviour; highest in osteoblasts from subchondral origins in OA and trabecular origins in OP. We found virtually identical bone type-related differences, however, in *TNFRSF11B:TNFSF11* in OA and OP, consistent with greater potential for paracrine effects on osteoclasts in trabecular osteoblasts. Subchondral osteoblasts (OA) exhibited highest *VEGF-A* mRNA levels and release. Our data indicate that human osteoblasts in trabecular, subchondral and cortical bone have inherent, programmed diversity, with specific bone type-related differences in growth, differentiation and pro-angiogenic potential *in vitro*.

Keywords: *In vitro*, human osteoblasts, shoulder arthroplasty, vasculature, subchondral, trabecular, cortical, osteogenic differentiation.

*Address for correspondence:

Mittal Shah, PhD

Department of Comparative Biomedical Science

Royal Veterinary College, London, NW1 0TU, UK

Telephone number: +44 (0)2074685248

Email: mshah@rvc.ac.uk

Introduction

Osteoblasts isolated from diverse anatomical sites have been used to study bone cell behaviour *in vitro*. Thus, calvarial- and long bone-derived cells from rodents are very common model systems. Cells with disparate origins, such as trabecular and cortical bone, are also used somewhat interchangeably, to inform understanding of skeletal biology. Although all bone exhibits some highly conserved factors in its development, remodelling and repair, it is also apparent that the response to many *in vivo* challenges is not always identical in trabecular, cortical and subchondral bones types (Lavigne *et al.*, 2005; Simon *et al.*, 2008; Wade-Gueye *et al.*, 2010). Differences in osteoblasts derived from long bone and calvarial sites, including distinct transcriptional signatures, have been described *in vitro* (Akintoye *et al.*, 2006; Rawlinson *et al.*, 2009). Solchaga and colleagues have described the difference in osteogenic potential in cells from the same bone, however originating from different anatomical locations such as marrow and periosteum in rabbit tibia (Solchaga *et al.*, 1998). Furthermore, within the same bone structure, osteoblasts display differential gene transcriptions depending on their anatomical location (Candelieri *et al.*, 2001). Cell preparations from trabecular, cortical and subchondral bone types have not yet, however, been extensively compared in parallel assays and it remains possible that bone cell behaviour in these diverse bone types may be underpinned by the origins and performance of local osteoblasts. It is also possible that sampling and assessment of cells from one particular bone type might obscure or conceal differences in osteoblasts, when comparing disease states.

The trabecular bone is located mainly in the metaphysis and extremities of long bones and comprises of structures and architectures that differ markedly from those found in the cortical or subchondral bone. Despite constituting a relatively small fraction of total bone volume, organisational alignment of bone structures in this trabecular compartment normally produces robust load-bearing and much of the total bone surface area for remodelling (Lanyon, 1984). Trabecular bone is also more porous and less dense than cortical bone, and supplies most of the exchangeable pool of calcium. It is thought that this large surface area contributes to a higher metabolic remodelling activity compared to cortical bone (Aeressens *et al.*, 1997). These comparisons illustrate the differing functions of bone that exist even within a single anatomical location in these structurally diverse compartments, and it is clear that they also differ in how they are affected by

metabolic challenges, vascular influences or diseases, such as osteoarthritis (OA) and osteoporosis (OP).

These distinct types of bone compartment are affected differently in OA and OP, and both diseases are also strongly influenced by age and metabolism, and by mechanical load-related and inheritable genetic factors (Aerssens *et al.*, 1997; Bultink and Lems, 2013; Lories and Luyten, 2012; Richards *et al.*, 2012). OA progression involves cartilage degradation, synovium and tendon inflammation, osteophyte formation and a characteristic thickening of the subchondral bone plate (Li *et al.*, 1999). This subchondral bone thickening is thought to have mechanical origins and may also be associated with emerging genetics, such as *GDF5* (encoding growth differentiation factor 5) polymorphisms that have been linked with OA (Dodd *et al.*, 2012). The diminished bone mass and microarchitecture deterioration in OP is likely linked to dysfunctional mechanoadaptive responses or, for example, variants of multiple genes associated with bone mineral density such as *VDR* (encoding vitamin D receptor), *PTH1R* (encoding PTH receptor 1), *RANK-RANKL-OPG*, oestrogen and Wnt signalling pathways (Estrada *et al.*, 2012; Kanis and Johnell, 2011). The relationship between OA and OP is debated (Dequeker *et al.*, 1975; Jiang *et al.*, 2008; Pervaiz *et al.*, 2013; Verstraeten *et al.*, 1991). It is clear, nevertheless, that bone in the trabecular compartment in OP patients has lower strength and is of poor quality, whereas sclerotic, stiffer bone is found in the subchondral trabecular compartment in OA. These increases in stiffness of OA bone are not however necessarily correlated with strength. Indeed, Ding *et al.* (Ding *et al.*, 2002) reported that the subchondral thickness is significantly increased in early OA but that it remains weaker than bone in healthy patients. For these reasons, comparisons between trabecular-, cortical- and subchondral-derived osteoblasts in distinct OA and OP patient groups will likely reveal any conserved bone type-selective behaviours of osteoblasts isolated from these different compartments. Conversely, any disease related differences that are conserved in all bone types in either OA or OP osteoblasts might provide novel insight into the underpinning disease mechanisms.

Most studies using isolated primary human osteoblasts have not regarded the possibility that their site of origin from within a bone may influence behaviour. We have explored the hypotheses that osteoblasts derived from subchondral, cortical and trabecular bone types (from OA patients) exhibit differing osteogenic potential, and that these regional differences will persist even in samples from OP patients where osteogenic potential of isolated osteoblasts will be diminished. Using osteoblasts derived from these different bone types within a singular skeletal element, namely the head of the human humerus from OA and OP patients undergoing shoulder replacement surgery, our studies find that osteoblasts from OP patients exhibit a lesser osteogenic potential. Consistent with our hypothesis, we also find, however, a preservation of divergent growth dynamics, differentiation potential and modified pro-angiogenic activity in osteoblasts derived from trabecular, cortical and subchondral bone types. Divergent osteogenic and angiogenic potentials of bone cells from the different bone types could influence the design and selection of

future orthopaedic implants in the human shoulder, and perhaps more broadly, such that they achieve improved osseointegration and thus limit complications, such as prosthetic loosening, gleno-humeral instability and peri-prosthetic fracture (Bohsali *et al.*, 2006).

Materials and Methods

Patients and sample preparation

Paired subchondral, trabecular and cortical bone samples were obtained intra-operatively from nine consecutive female patients during open total shoulder replacements or hemiarthroplasties. There were five female OA (mean age, 74 years; range 72-81 years) and four female OP patients (mean age, 80 years; range 73-86 years) selected by NHS clinical guidelines. None of these OP patients were suffering from vitamin D deficiency or renal disease and none were receiving cortisone treatment. All OP patients had received bisphosphonate treatment and dietary calcium supplements. Our supplementary studies used the rare opportunity to make comparison with paired subchondral, trabecular and cortical bone samples from one 'normal' female patient (30 years of age, undergoing humeral metaphyseal metastasis resection) without osteoarthritis or osteoporosis (Royal National Orthopaedic Hospital). Informed consent was obtained preoperatively from each patient in accordance with the approval from the Ethical Committees of Imperial NHS trust and Royal National Orthopaedic Hospital Biobank regulations in compliance with the United Kingdom Human Tissues Act 2004. Bone samples were collected under aseptic conditions in separate containers and transported from the operating theatre in sterile phosphate-buffered saline (PBS).

Preparation of explants and subchondral, trabecular and cortical bone primary osteoblasts

Separate explant cultures were prepared from subchondral (Hilal *et al.*, 1998), trabecular (Taylor *et al.*, 2014) and cortical bone samples taken from fixed anatomical locations from each patient during surgery (Fig.1). Subchondral bone was prepared by removing overlaying cartilage from the resected humeral head using a scalpel, followed by removal of trabecular bone from beneath using bone-cutters and rongeurs. This produces multiple ~ 2 mm thick subchondral bone plate fragments, from which trabecular remnants were removed using a scalpel and scissors, that were subsequently dissected into ~ 1 mm³ pieces. Trabecular bone from the humeral metaphysis was cut into ~ 1 mm³ chips and cleared of superficial marrow and fat by extensive agitation in PBS. Cortical bone, obtained by rongeur from the proximal humerus, was cleared of adherent marrow by scalpel, cut into ~ 1 mm³ chips using a bone cutter and washed by extensive PBS agitation. In all three cases, dissected segments were then placed in sterile PBS.

These bone chips were used to establish explant cultures (multiple ~ 1 mm³ bone chips (~ 20-30) in each flask (typically 2 flasks) for each bone type from each patient) to facilitate osteoblast outgrowth as previously described (Beresford *et al.*, 1993; Clarkin *et al.*, 2008a; Clarkin *et al.*

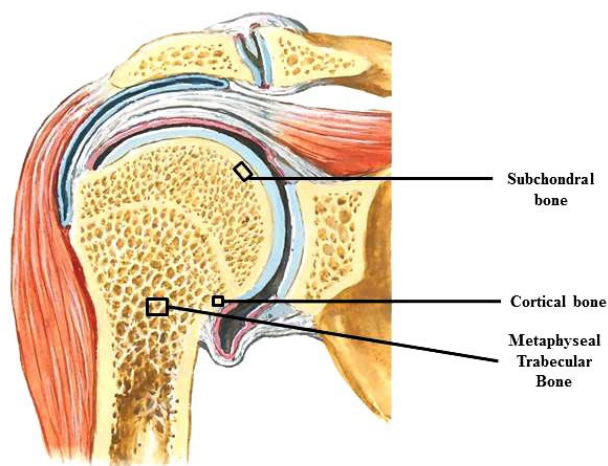


Fig. 1. Cross-sectional schematic illustration of a Human gleno-humeral joint depicting different anatomical bone types. The different bone types from which the samples were obtained for the current study are highlighted in the black boxes. Figure purchased from Netter Images (Elsevier: www.netterimages.com).

al., 2008b; Couchourel *et al.*, 2009; Dillon *et al.*, 2012; Gallagher *et al.*, 1996; Grigoriadis *et al.*, 1988; Hilal *et al.*, 1998; Jagodzinski *et al.*, 2004; Kwan Tat *et al.*, 2010; Lajeunesse, 2002; Oshina *et al.*, 2007; Rawlinson *et al.*, 1995; Rawlinson *et al.*, 2009; Siggelkow *et al.*, 1999; Simon *et al.*, 2008; Taylor *et al.*, 2014; Wong *et al.*, 1990). Briefly, to restrict the number of non-bone contaminating cells the bone segments were washed with PBS containing 10 % antibiotic-antimycotic (AB/AM) (Invitrogen, Paisley, UK) six times by vortexing and transferred into appropriately labelled 7 mL bijoux tubes containing 0.25 % trypsin- trypsin/ethylenediaminetetraacetic acid (EDTA) (Invitrogen, Paisley, UK) and placed in a shaking water bath at 37° C for 10 min. After a brief wash in PBS, the segments were incubated with 1 % type II collagenase from *Clostridium histolyticum* (Sigma Aldrich, Dorset, UK) for 30 min in a shaking water bath at 37° C to remove contaminating surface marrow cells. The bone chips were washed three times in sterile PBS containing 10 % antibiotic-antimycotics, then placed into 75 mm² tissue culture flasks (NUNC, UK) with Dulbecco's minimal essential medium (DMEM; without phenol red, containing sodium pyruvate and 1 g/L d-glucose; (Invitrogen, Paisley, United Kingdom)) supplemented with 10 % heat-inactivated foetal bovine serum (Invitrogen, Paisley, United Kingdom), 2 mM L-glutamine, 100 U/mL of penicillin, 100 mg/mL of streptomycin and 0.25 µg/mL Amphotericin) and maintained in a humidified incubator at 37° C for 6-8 weeks to allow cellular outgrowth with media changes every week. Cells were observed growing out the explant after 7 days. Explant cultures (for each bone type in each patient) were prepared for subsequent analysis (see below) and cell outgrowth (% confluence) was monitored daily using a grid system placed under each culture flask to assess the number of days taken to produce 85 % cell coverage of the total grid surface (expressed as 1/number of days

taken). Having reached 85 % confluence, each of these cultures were first washed with PBS and the remaining bone chips discarded, then Accutase™ (Invitrogen, Paisley, UK)-digested, replicate flasks (typically 2) pooled and sub-seeded in a range of formats described below, with media changes performed every 2 days, for subsequent analyses in which only passage 1 cells were used. In the case of the single set of rare normal samples, explants of each bone type were re-cultured three times following confluence to establish new replicate independent cultures (e.g. E1, E2, E3) as described elsewhere (Gartland *et al.*, 2012).

Cell number and viability

Prior studies have shown four-fold increase in human osteoblast numbers between 1-10 days of culture (Siggelkow *et al.*, 1999). Crystal violet viability test was employed based on the inability of dead cells to remain adherent to cell culture plastic (McDonald *et al.*, 2013; Sohaskey *et al.*, 2010; Vora *et al.*, 2010). Briefly, cells derived from subchondral, trabecular and cortical bone explants were sub-seeded at 2,000 cells/well into 48-well plates in basal media and maintained for 10 days before assessment of cell number and viability (triplicates for each bone type from each patient). After 10 days, cells were washed three times with PBS and fixed in 4 % para-formaldehyde (PFA) (Sigma Aldrich, Dorset, UK). Monolayers of attached cells were then stained with 0.1 % crystal violet dye in distilled H₂O for 30 min for DNA. Excess dye was removed and cells thoroughly washed and bound stain subsequently eluted from cells using 10 % acetic acid. The quantity of eluted stain was measured at 595 nm using a 96-well microtitre plate reader. A standard curve was prepared with known serial dilutions of stained cells from which and the total numbers of DAPI (Invitrogen, Paisley, United Kingdom) positive cells in the experiments were extrapolated.

Alkaline phosphatase activity (TNAP) assay and staining

Osteoblasts derived from subchondral, trabecular, and cortical human bone were sub-seeded at 20,000 cells/well in 24-well plates in triplicate per patient and maintained in basal medium with half media changes on alternate days until confluent (typically 15 days for subchondral and cortical, and 21 days for trabecular osteoblasts). Cells were then incubated in either basal medium or basal medium supplemented with β-glycerophosphate (2 mM), ascorbate-2-phosphate (50 µg/mL) and a synthetic glucocorticoid (10 nM dexamethasone, Sigma, Dorset, UK (referred to as osteogenic medium, + OM herein) for 36 days prior to assessment of TNAP activity (triplicates for each bone type from each patient).

Total TNAP activity was assessed in cell lysates from individual wells by a method modified from that described by Lowry *et al.* and Shah *et al.* (Lowry *et al.*, 1954; Shah *et al.*, 2010). Briefly, cells were rinsed three times with PBS, digested with 0.1 % Triton X-100, scraped off the plate and the cell suspension sonicated (Ultrasonic disintegrator, MSE laboratories, Butte, MT). Briefly, enzyme activity in half of total volume of these cell lysates was measured in assay buffer containing 0.1 M diethanolamine, 1 mM

MgCl₂ and 2 mM p-nitrophenylphosphate (Sigma Aldrich, Dorset, UK) pH 10.5 added to cell homogenates. A standard curve was prepared with p-nitrophenol solutions. Incubation of standards and samples was performed at 37° C for 5 min and the reaction stopped by adding 0.3 M NaOH. Reaction mixtures were transferred into 96-well plates and absorbance measured at 410 nm. A fraction of the lysate was also used to measure protein content with the bicinchoninic acid (BCA) assay reagent (Pierce, Rockford, IL) and the relative TNAP activity was defined as nanomoles of p-nitrophenol phosphate hydrolysed /min/mg of total protein. TNAP activity was also visualised by histochemical staining in additional wells using naphthol AS-TR (Sigma Aldrich, Dorset, UK) as a substrate and Fast blue to produce a coloured precipitate, as previously described (Shah *et al.*, 2010). Stained wells were imaged using a high-resolution flatbed scanner.

RNA isolation

Human osteoblasts from each of the patient-matched bone types were sub-seeded at 20,000 cells/well in basal medium in 24-well plates in triplicate and maintained until confluent (see above), at which point total RNA was collected for gene expression analysis (in triplicate). For *TNAP* mRNA expression analysis, total RNA was collected 24 h; 7 d and 14 d post confluence. Medium was removed and the monolayers were agitated and lysed with 200 µL Qiazol (Qiagen, UK) using a cell scraper. The lysates were transferred into clean microcentrifuge tubes and homogenised by passing through a 23 g sterile needle and 200 µL of 100 % ethanol added. The homogenates were

then vortexed 3 times for 5 s. Total cellular RNA was isolated from the homogenates using the Direct-Zol™ miniprep kit (Zymoresearch, Cedarlanelabs, Canada) according to the manufacturer's instructions. RNA integrity was established by gel electrophoresis and RNA purity by nanodrop spectroscopy (NanoDrop® ND-1000 UV-Vis Spectrophotometer (Thermo Scientific, UK)). Acceptable samples displayed two clear ribosomal bands (indicating no degradation had occurred during isolation), 260/280 ratios > 2.0 and 260/230 ratios > 1.8 (Hildyard and Wells, 2014; Nolan *et al.*, 2006).

cDNA synthesis and Real Time Quantitative PCR

Reverse transcription was performed on triplicate 200 ng samples of total RNA (20 µL reaction volume) using a high-capacity RNA-to-complementary DNA (cDNA) kit (Applied Biosystems (Invitrogen, Paisley, UK)) run at 37° C for 60 min and at 85° C for 5 min (Poulet *et al.*, 2012). To detect messenger RNA (mRNA) transcripts, primers (designed using Primer3 Plus (Galea *et al.*, 2013; Rozen and Skaletsky, 2000) (see Table 1 for details)) were pre-mixed with SYBR Green JumpStart Taq ReadyMix (Sigma Aldrich, Dorset, UK), and 10 µL aliquots were applied to 384-well optical plates (white hard-shell thin-walled) Bio-Rad Biorad, Herts, UK), The 1:4 diluted cDNA were applied in triplicate in 2 µL aliquots such that each plate consisted matching subchondral, trabecular and cortical bone samples from all patients (in triplicate). Thermal cycling conditions were as follows: 10 min at 95° C, with 40 cycles of 15 s at 95° C, 30 s at 60° C, and 20 s at 72° C, on a Bio-Rad CFX384 Real-Time System. Dilution series were

Table 1. List of Primers used for qPCR. ^(a) (Atkins *et al.*, 2011) and ^(b) (Kiselak *et al.*, 2010).

NCBI Reference	Details	Gene ID		Primer Sequence 5' - 3'
NM_001024630.3	Runt related transcription factor 2 (RUNX2)	<i>RUNX-2</i>	Forward	GGAGTGGACGAGGCAAGAGTTT
			Reverse	AGCTTCTGTCTGTGCCTTCTGG
NM_001173467.1	Osterix	<i>SP7</i>	Forward	TGGACATGACACACCCCTATG
			Reverse	CCACCACCTAGCCAGTTGC
NM_004967.3	Bone Sialoprotein-II	<i>BSP-II</i>	Forward	GAACCTCGTGGGACAATTAC
			Reverse	CATCATAGCCATCGTAGCCTTG
NM_199173.4	Osteocalcin	<i>BGLAP</i>	Forward	CTTTGTGTCCAAGCAGGAGG
			Reverse	CTGAAAGCCGATGTGGTCAG
NM_001025366.2	Vascular endothelial growth factor-A	<i>VEGF-A</i>	Forward	CACTGAGGAGTCCAACATACC
			Reverse	CTGCATTACATTTGTTGTC
NM_003701.3	Receptor activator of nuclear factor kappa-B ligand (RANKL)	<i>TNFSF11</i>	Forward	CCAGGTTGTCTGCAGCGT
			Reverse	TGCAGTGAGTGCCATCTTCT
NM_002546.3	Osteoprotegerin (OPG)	<i>TNFRSF11B</i>	Forward	GCAACACAGTCCACAAGAAC
			Reverse	GAAGGTGAGGTTAGCATGTCC
NM_000478.4	Alkaline phosphatase	<i>TNAP</i> ^(a)	Forward	TGCTCCCACGCGTTGTGCCTGGA
			Reverse	CTGGCACTAAGGAGTTAGTAAG
NR_003286.2	18s rRNA	<i>18s rRNA</i> ^(b)	Forward	GGCCCTGTAATTGGAATGAGTC
			Reverse	CCAAGATCCAACACTACGAGCTT
NM_004048.2	β₂-Microglobulin	<i>B2M</i>	Forward	AGCAAGGACTGGTCTTCTATCTC
			Reverse	CATGTCTCGATCCCCTTAACATC

used to establish that residual cDNA synthesis reagents did not impair PCR efficiency and each run consisted of melt curve analysis and template-free controls to confirm specific, single product amplification. All primer pairs produced single amplicons and reactions were of similar efficiency (95-100 %), as established by standard dilution curve and analysis. Target gene quantification was achieved using the $2^{-\Delta\Delta CT}$ method described by Livak *et al.* (Livak and Schmittgen, 2001) adapted from Pfaffl (Pfaffl, 2001) relative to the ratio of β_2 -microglobulin (*B2M*); *18s rRNA* (*18s*) which were chosen against a panel of housekeeping genes; β -actin, *cyclophilinA* and *GAPDH* using GeNorm software to determine the most stable housekeeping gene (<http://medgen.ugent.be/~jvdesomp/genorm/>) by making pairwise comparison to rank candidate genes by summed individual variation, discarding the most variant before repeating pairwise analysis to identify β_2 -microglobulin and *18s rRNA* genes with minimum respective variation (Bustin *et al.*, 2009; Hildyard and Wells, 2014; Nolan *et al.*, 2006).

Quantification of Vascular Endothelial Growth Factor-A₁₆₅ protein release

Human osteoblasts from each bone type were seeded in 24 well plates (passage 1) at a density of 20,000 cells/well (triplicates per patient) were maintained in basal media until confluent. At confluence, conditioned media were collected (and monolayers lysed for RNA collection, as indicated above). VEGF₁₆₅ concentration was measured by enzyme linked immunosorbent assay using the VEGF₁₆₅ antibody pair kit (Novex, Invitrogen) according to manufacturer's instructions. In order to maximise yield of data from these cells, VEGF-A₁₆₅ concentration in osteoblast-conditioned medium was normalised to total RNA content measured by nanodrop spectroscopy (Clarkin *et al.*, 2011); RNA was also used in qPCR analyses.

Statistical Analysis

Triplicate cultures were evaluated within each end point assay for statistical analysis. Therefore, in each case triplicate technical replicates for each endpoint assay were pooled and averaged to eliminate pseudo empowerment of data before statistical testing. Respective data from each patient were treated as independent samples and comparisons between osteoblasts from each bone type within each patient group made using Friedman test since the data violated Gaussian distribution (visual inspection of histograms). *Post hoc* Dunn's multiple comparison tests were employed for multiple comparisons. Unpaired comparisons between patient groups (OA vs. OP), for osteoblasts from each bone type, were performed using Mann-Whitney U test since the data also violated normality rules and were unpaired. *p* values of less than 0.05 were considered significant. In addition, principal components analysis (PCA) (Poulet *et al.*, 2014; Ringner, 2008), a dimension reduction technique, was used to summarise 16 correlated measurements (corresponding to all individual end-point targets measured) into a few uncorrelated principal components (PC) across both patient groups and bone types. A linear mixed effects model was used to assess osteoblast differences between bone types and between

patient groups while accounting for repeated measures from the same patient, and Fisher's least significant difference was adopted for *post-hoc* comparison. PCA and linear mixed model analyses were carried out using IBM-SPSS version 20. All other statistical tests were carried out using Prism Graphpad version 6.0f for Mac, (GraphPad Software, La Jolla California USA, www.graphpad.com).

Results

Osteoblasts from subchondral and cortical bone types proliferate more rapidly than those derived from trabecular bone

Following collagenase digestion, bone chips were devoid of adherent marrow, and cells emerged from explants within 10-14 days of culture. The number of days taken for such cell outgrowth to reach 85 % confluence was recorded and revealed markedly different rates of outgrowth in samples from different bone types (Fig. 2a), with subchondral and cortical bone osteoblasts from OA patients showing similar growth, which significantly exceeded rates from trabecular bone by ~ 10 % ($p < 0.01$) and ~ 12 % ($p < 0.01$), respectively (Fig. 2a). A tendency for such superior growth was also evident in osteoblasts from OP patients, where subchondral and cortical bone osteoblasts significantly exceeded growth seen in trabecular osteoblasts only more markedly (by 63 %, $p < 0.01$; 70 %, $p < 0.01$, respectively (Fig. 2a)); outgrowth from subchondral and cortical bone did not differ significantly. These data show that bone type-related differences in rate of growth are retained, despite markedly divergent ($p < 0.01$) rates in OP and OA samples. Similar bone type-related differences in cell outgrowth rates, albeit 50 % faster, were also apparent in cells derived from a normal patient (Fig. 9a).

In order to validate these relationships and to control for any bulk cellularity differences between explants, osteoblasts derived from each bone type were seeded at 2,000 cells/well and cell numbers measured after 10 days. This confirmed growth was similar in cortical and subchondral bone osteoblasts and that both exceeded growth of trabecular-derived cells by 25 % ($p < 0.01$) and 43 % ($p < 0.01$) in OA, and by 180 % ($p < 0.01$) and 175 % ($p < 0.01$) in OP patients (Fig. 2b). These bone type-related differences in growth rate were preserved, even though osteoblasts in all three types of bone from OA patients showed significantly faster growth compared to OP patients (by 57 %, 75 % and 86 % in subchondral, trabecular and cortical bone types ($p \leq 0.05$, 0.001 and 0.01), respectively; Fig. 2b). Similar bone type-related trends were found in osteoblasts in the bone samples from the normal patient (Fig. 9b).

RUNX2 and SP7 mRNA levels are greater in osteoblasts from trabecular than subchondral and cortical bone types

The different growth patterns in cells derived from distinct bone types, led us to also examine basal osteogenic gene expression by qPCR. We found that *RUNX2* mRNA, the early osteoblastic marker was significantly elevated in osteoblasts from trabecular compared to subchondral and

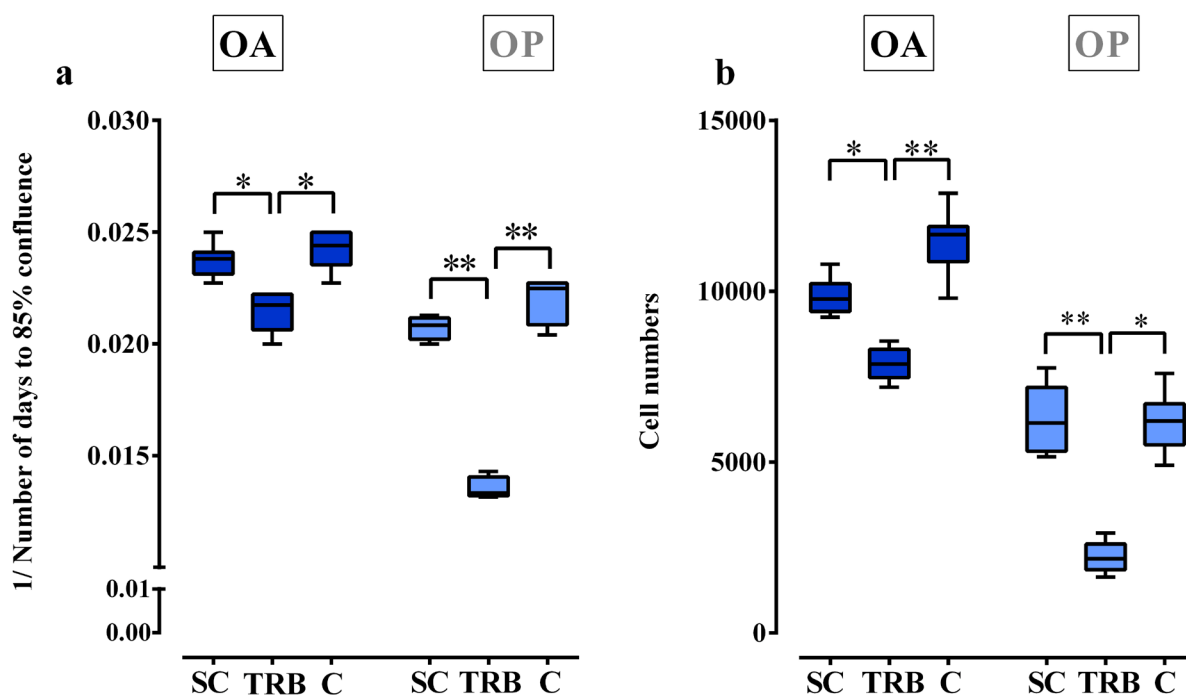


Fig. 2. Human osteoblasts from subchondral (SC), trabecular (TRB) and cortical (C) bone types from OA ($n = 5$ donors) (dark blue boxes) and OP ($n = 4$ donors) (light blue boxes) exhibit modified growth characteristics. (a) Rate of OB growth from SC, TRB and C types of bone explant (to 85 % confluence). (b): OB cell growth from SC, TRB and C bone types over 10 days measured by crystal violet staining and DAPI nuclear counting. Results are expressed as the mean and 95 % CI (Confidence Intervals). *, ** or *** indicates p -values less than 0.05, 0.01 or 0.001 respectively compared between osteoblast types. Comparisons between OA and OP for each osteoblast type resulted in p -values less than 0.01.

cortical bone types obtained from both OA (by 43 %, $p < 0.01$ and 72 %, $p < 0.001$ respectively) and OP patients (by 41 %, $p < 0.01$ and 83 %, $p < 0.001$, respectively) (Fig. 3a,b). These studies also showed that *RUNX2* mRNA levels in subchondral-derived osteoblasts were greater than in osteoblasts from cortical bone from both OA (by 41 %, $p < 0.01$) and OP patients (by 32 %, $p < 0.01$).

Examination of mRNA levels of *SP7*, a *RUNX2* downstream target, also showed greater expression in trabecular- than in subchondral- (30 %, $p < 0.001$) and cortical-derived (67 %, $p < 0.001$) osteoblasts from OA patients (Fig. 3c). Osteoblasts from these different bone types also showed similar, albeit more marked differences when taken from OP patients (50 % and 83 % greater in trabecular osteoblasts compared to cortical and subchondral osteoblasts) (Fig. 3d). OP osteoblasts exhibited lesser *RUNX-2* and *SP-7* expression in all osteoblasts compared to OA osteoblasts ($p < 0.01$). These data illustrate that osteoblasts from both OA and OP show conserved, statistically divergent *RUNX2* and *SP7* mRNA levels in different bone types, and that the ratio of *RUNX2:SP7* were not significantly different in osteoblasts of the different bone types from each. Preliminary data from osteoblasts from normal bone exhibited similar bone type-related differences in *RUNX2* and *SP7* mRNA expression levels (Fig. 9c,d); exceeded those found in OA and OP samples.

TNAP activity is enriched in trabecular human osteoblasts

TNAP activity is a marker used to evaluate osteogenic activity. The divergent bone type-related *RUNX2* and *SP7* mRNA expression prompted an evaluation of TNAP activity in cells from each of the three bone types under basal, otherwise unstimulated (Fig. 4a,c) and osteogenic conditions (Fig. 4b,d). This showed that osteoblasts from trabecular bone type expressed greater TNAP activity under basal conditions (21 %, $p < 0.05$; and 52 %, $p < 0.01$) compared to subchondral and cortical types from OA patients. In OP patients, trabecular osteoblasts again showed greater TNAP activity compared to other bone types (30 %, not significant and 66 %, $p < 0.01$, respectively). TNAP activity in osteoblasts from each bone type in from OA always exceeded OP samples ($p < 0.01$).

Bone type-related differential basal TNAP activities led us to examine differences under basal and osteogenically stimulated conditions. These data showed increases in TNAP activity in osteoblasts from all bone types in both OA and OP patients, with more marked increases in osteoblasts from subchondral and trabecular bone types. These increases did not, however, mask the more marked differences in TNAP activity in osteoblasts from each of the three bone types, with those from trabecular origins retaining the highest and those from cortical origins lowest TNAP activity in both OA and OP groups. Induced

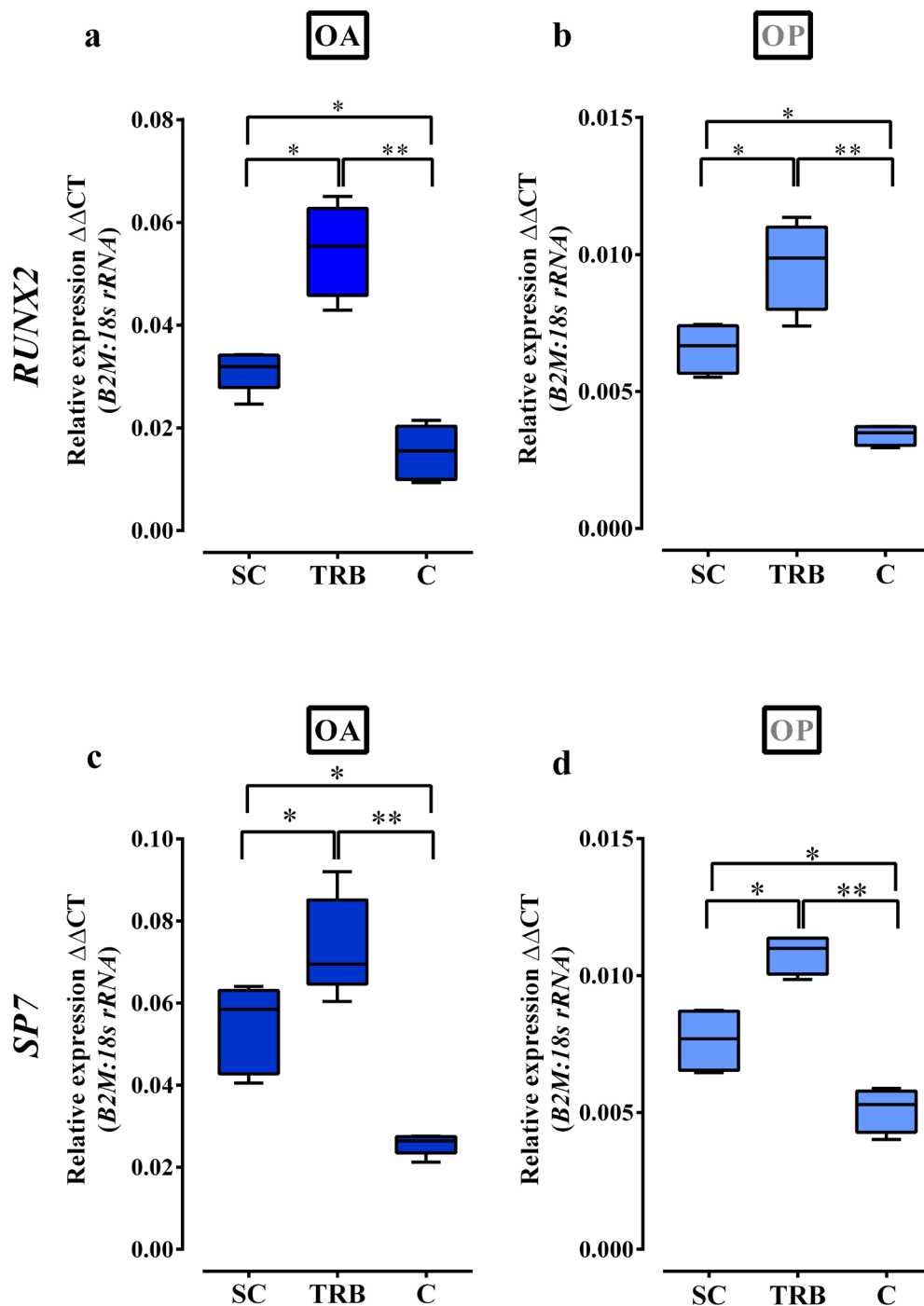


Fig. 3. Osteogenic gene expression in subchondral (SC), trabecular (TRB) and cortical (C) osteoblasts derived from OA ($n = 5$ donors) (dark blue boxes) and OP ($n = 4$ donors) (light blue boxes). *RUNX2* (a, b) and *SP7* (c, d) osteogenic mRNA expression levels measured by qPCR. Results are expressed as relative mean and 95 % CI. * and ** indicates p -values less than 0.05 and 0.01 respectively compared between osteoblast types. Comparisons between OA and OP for each osteoblast type resulted in p -values less than 0.01.

differentiation did, however, mask the differences apparent between subchondral and trabecular bone types. We also measured ALP mRNA levels in cells from each bone type at a range of time-points, post-confluence which revealed greatest *TNAP* mRNA levels in trabecular and lowest levels in cortical bone osteoblasts, in both OP and OA patients (Table 2). They also show that *TNAP* mRNA levels do not change significantly from 24 h to 7 and 14

days post-confluence. Comparing osteoblasts from each bone type showed that *TNAP* mRNA expression levels were significantly lower in cells from OP compared to OA patients ($p < 0.01$). Data from osteoblasts derived from the single 'normal' patient also exhibited these bone type-related differences in ALP activity under both basal and osteogenically stimulated conditions (Fig. 9e,f).

Table 2. *TNAP* mRNA expression over 24 h, 7 d and 14 d in subchondral (SC), trabecular (TRB) and cortical (C) osteoblasts derived from OA ($n = 5$ donors) and OP ($n = 4$ donors) measured by qPCR. Results are expressed as relative mean \pm SEM. ^{a, b} indicates p -values less than 0.05 when SC and C compared to TRB respectively. Comparisons between SC and C are labelled with ^c indicating $p < 0.05$. Comparisons between OA and OP for each osteoblast type resulted in p -values less than 0.01.

OA	24 h	7 days	14 days
SC	0.03559 \pm 0.001412	0.04083 \pm 0.0013	0.03684 \pm 0.0015
TRB	0.05606 ^{a, b} \pm 0.004206	0.05978 ^{a, b} \pm 0.0035	0.05802 ^{a, b} \pm 0.0044
C	0.02009 ^c \pm 0.00243	0.023 ^c \pm 0.0028	0.0208 ^c \pm 0.0025
OP	24 h	7 days	14 days
SC	0.02279 \pm 0.00113	0.02233 \pm 0.0017	0.02131 \pm 0.0008
TRB	0.0323 ^{a, b} \pm 0.000796	0.03191 ^{a, b} \pm 0.03191	0.03284 ^{a, b} \pm 0.0013
C	0.01221 ^c \pm 0.000782	0.01413 ^c \pm 0.0009	0.01623 ^c \pm 0.0027

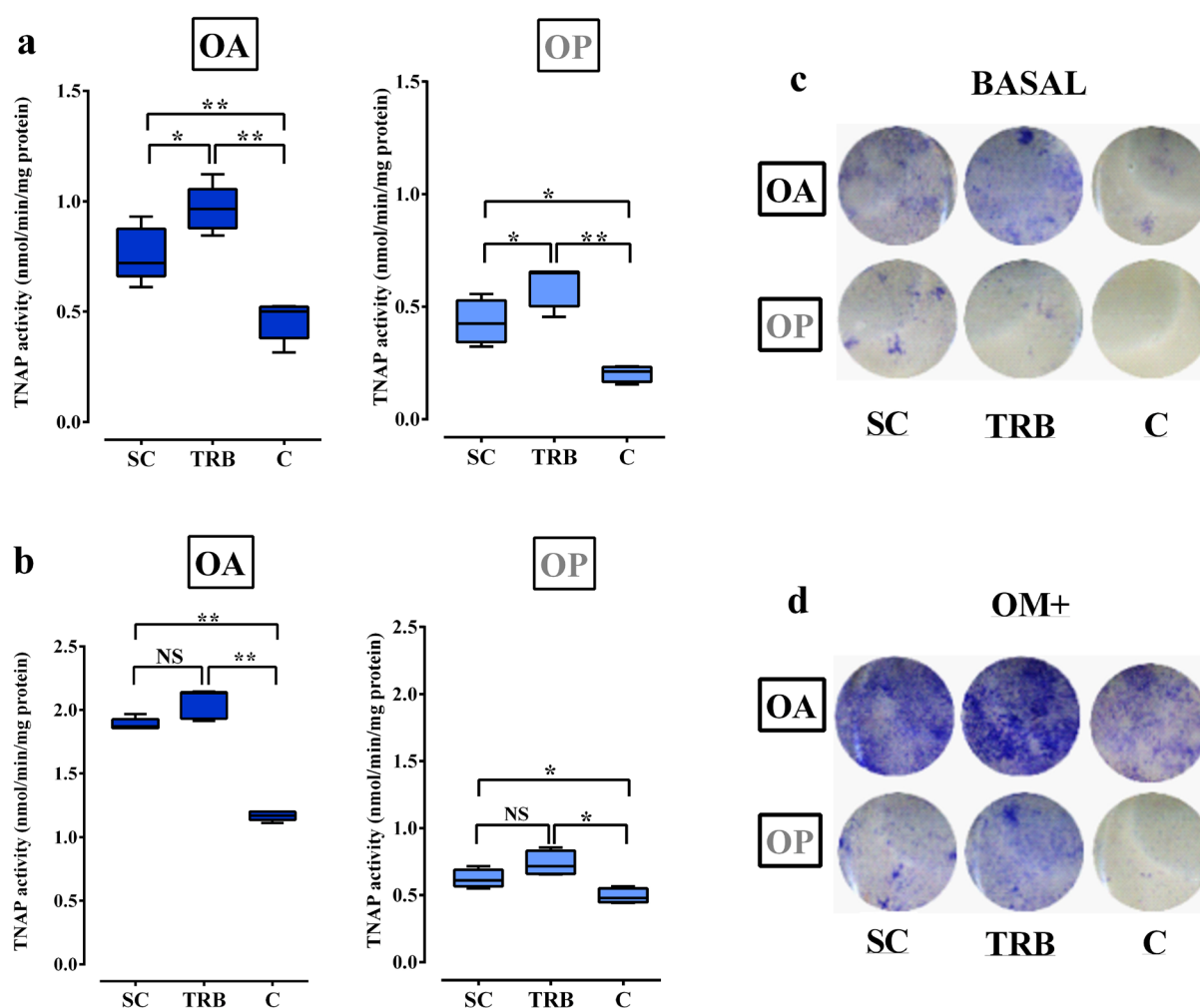


Fig. 4. TNAP in subchondral (SC), trabecular (TRB) and cortical (C) osteoblasts from OA ($n = 5$ donors) (dark blue boxes) and OP ($n = 4$ donors) (light blue boxes) under basal and induced osteogenic conditions. Panel **a**: TNAP activity in OA and OP cells under basal conditions. Panel **b**: TNAP activity after osteogenic stimulation. TNAP was measured using p-nitro-phenyl phosphate as a substrate and normalised to total cellular lysate protein content. Results are expressed as the mean and 95 % CI. *, ** or *** indicates p -values less than 0.05, 0.01 or 0.001 respectively compared between osteoblast types. Comparisons between OA and OP for each osteoblast type resulted in p -values less than 0.01. Panel **c**, **d**: Representative images of fixed subchondral (SC), trabecular (TRB) and cortical (C) osteoblasts from OA ($n = 5$ donors) and OP ($n = 4$ donors). TNAP activity was assessed as described in the methods by the hydrolysis of naphthol AS-TR and fast blue precipitate under basal and osteogenic conditions.

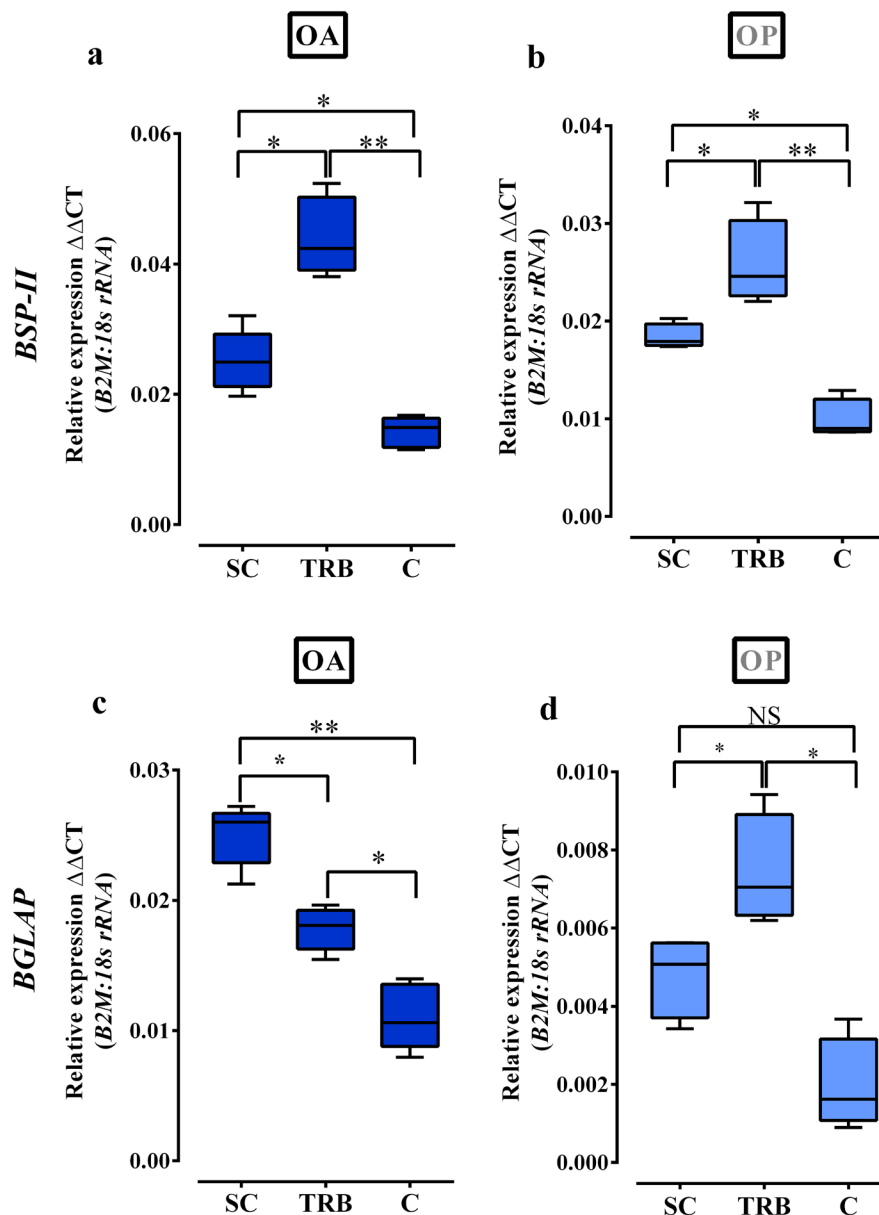


Fig. 5. Osteoblast maturation-related gene expression in subchondral (SC), trabecular (TRB) and cortical (C) osteoblasts derived from form OA ($n = 5$ donors) (dark blue boxes) and OP ($n = 4$ donors) (light blue boxes). *BSP-II* and *BGLAP* mRNA expression as the mean relative to the index of β_2 -microglobulin: *18s rRNA* in arbitrary units and 95 % CI. * and ** indicates p -values less than 0.05 and 0.01 respectively compared between osteoblast types. Comparisons between OA and OP for each osteoblast type resulted in p -values less than 0.01

Differential expression of maturation and bone matrix mineralisation genes in osteoblasts from different bone types

To evaluate if mRNA transcripts for factors involved in controlling intrinsic bone cell maturation- capacity differed in the three bone cell types, we measured *BSP-II* and *BGLAP* expression levels. In OA patients, we found that *BSP-II* mRNA levels were higher in trabecular- compared to subchondral-derived osteoblasts, which in turn were greater than in cortical osteoblasts (by 43 %, $p < 0.05$ and 67 %, $p < 0.05$, respectively) (Fig. 5a). Osteoblasts from OP patients also showed these bone type-related trends in *BSP-II* mRNA levels but were significantly lower than in osteoblasts from OA patients ($p < 0.01$) (Fig. 5b).

BGLAP mRNA levels were, however, higher in subchondral bone osteoblasts than trabecular (31 %, $p < 0.05$) and cortical bone types (56 %, $p < 0.05$) in OA patients (Fig. 5c). In contrast, in the OP patient group, trabecular osteoblasts exhibited the highest *BGLAP* mRNA levels compared to subchondral osteoblasts (35 %, $p < 0.05$) and levels in the latter further exceeded levels observed in cortical osteoblasts (73 %, $p < 0.05$). Subchondral osteoblasts exhibited greater *BGLAP* mRNA levels than cortical osteoblast in OP patient group, although not significantly (Fig. 5d). It was noted that osteoblasts from OP patients showed broadly similar patterns of *BSP-II* mRNA expression but that *BGLAP* levels were markedly lower in all bone types in OP patients than corresponding

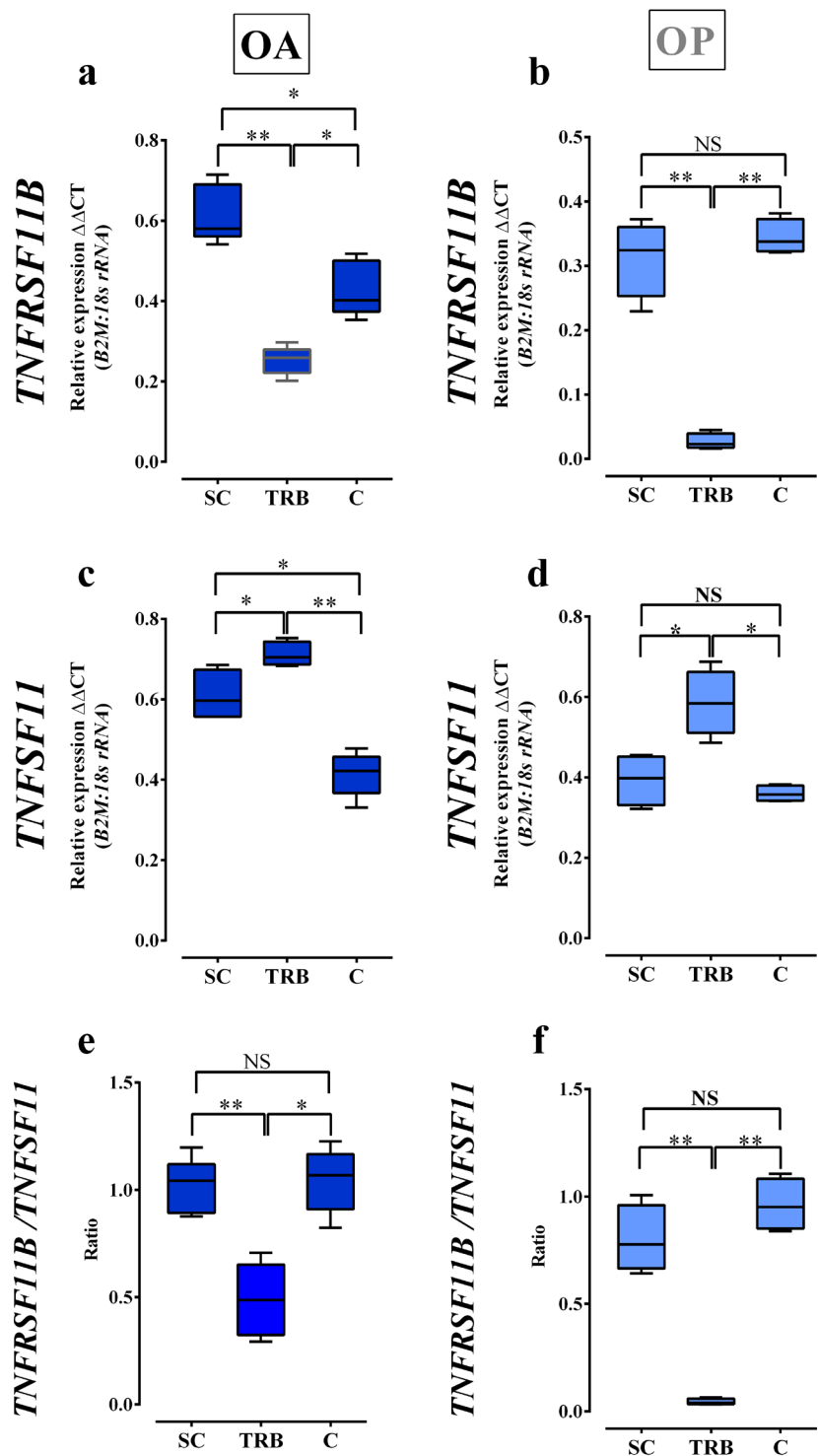


Fig. 6. *TNFRSF11B* / *TNFSF11* mRNA expression levels in subchondral (SC), trabecular (TRB) and cortical (C) osteoblasts derived from form OA ($n = 5$ donors) (dark blue boxes) and OP ($n = 4$ donors) (light blue boxes). *TNFRSF11B* (a, b) and *TNFSF11* (c, d) mRNA expression are expressed as the mean expression relative to the index of β_2 -microglobulin: 18s rRNA in arbitrary units and 95 % CI. Ratio of *TNFRSF11B* and *TNFSF11* mRNA expression is expressed as the mean expression relative to the index of β_2 -microglobulin: 18s rRNA in arbitrary units and 95 % CI. * and ** indicates p -values less than 0.05 and 0.01 respectively compared between osteoblast types. Comparisons between OA and OP for each osteoblast type resulted in p -values less than 0.01.

cells in the OA group ($p < 0.01$). Our preliminary studies using 'normal' bone samples showed that greatest *BSP-II* and *BGLAP* mRNA levels were also observed in trabecular osteoblasts from this patient (Fig. 9g,h). These results illustrate bone type-related differences in markers involved in matrix synthesis and mineralisation and broad conservation of these patterns in distinct patient groups.

Subchondral and cortical human osteoblasts have decreased potential to stimulate osteoclastogenesis

Having found that human osteoblasts exhibit characteristic growth/osteogenic differentiation behaviour in distinct

bone types which is conserved across both OA and OP patient groups, we sought to establish by measuring levels of *TNFRSF11B* and *TNFSF11* mRNA, whether they might also exhibit divergent capacity to exert a paracrine influence on osteoclastogenesis. RANKL is expressed in osteoblasts and stimulates osteoclast formation and differentiation, while OPG is a RANKL decoy receptor also produced in osteoblasts (Atkins *et al.*, 2003; Udagawa *et al.*, 1999). Thus, *TNFRSF11B* / *TNFSF11* ratios are often used as an index of osteoclastogenic potential. Our studies revealed virtually identical bone type-related differences in *TNFRSF11B*, *TNFSF11* and *TNFRSF11B* / *TNFSF11* ratios

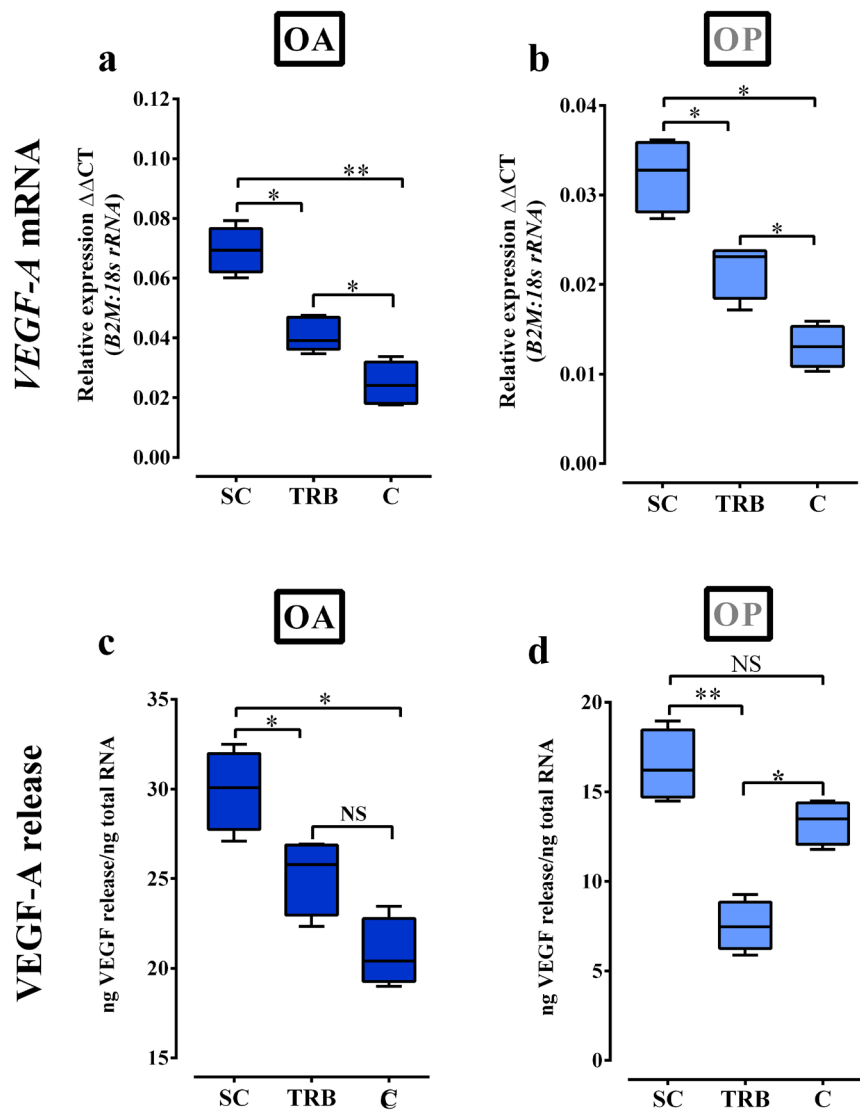


Fig. 7. *VEGF-A* mRNA levels and protein release in subchondral (SC), trabecular (TRB) and cortical (C) osteoblasts derived from OA ($n = 5$ donors) (dark blue boxes) and OP ($n = 4$ donors) (light blue boxes). *VEGF-A* mRNA expressed as the mean expression relative to the index of β_2 -microglobulin: *18s rRNA* in arbitrary units and 95 % CI (a, b). *VEGF-A* protein release as mean ng protein/ μ g total RNA and 95 % CI (c, d). * and ** indicates p -values less than 0.05 and 0.01 respectively compared between osteoblast types. Comparisons between OA and OP for each osteoblast type resulted in p -values less than 0.01.

in OA and OP groups. Thus, *TNFRSF11B* mRNA levels were significantly higher in osteoblasts with subchondral and cortical bone origins compared to trabecular counterparts; *TNFRSF11B* mRNA levels in each bone type were also higher in OA compared to OP ($p < 0.01$) (Fig. 6a,b). In contrast, *TNFSF11* mRNA levels were greater in trabecular type osteoblasts than in subchondral ($p < 0.05$) and cortical osteoblasts in both OA and OP patients (Fig. 6c,d). *TNFSF11* mRNA expression was higher in all sites in OA compared to OP osteoblasts ($p < 0.01$). Calculating *TNFRSF11B*/*TNFSF11* ratios to determine a remodelling 'index' demonstrated that subchondral and cortical bone osteoblasts in both patient groups were equivalent, yet were consistently higher than in osteoblasts with trabecular bone origins in both OA and OP patients ($p < 0.05$) (Fig. 6e,f). Osteoblasts from normal bone showed some deviation from this trend, with greater ratios in subchondral osteoblasts than in cortical, and least in trabecular bone osteoblasts (Fig. 9i-k).

Subchondral bone osteoblasts exhibit greatest *VEGF-A* mRNA expression and *VEGF-A*₁₆₅ release

Osteoblast *VEGF-A*₁₆₅ production is critical for coupling osteoblast and endothelial cell behaviour (Clarkin *et al.*, 2008a; Clarkin and Olsen, 2010) and exerts a vital role in promoting osteogenesis *in vivo* (Liu *et al.*, 2012). We therefore measured *VEGF-A* mRNA expression levels and *VEGF-A*₁₆₅ protein release by osteoblasts. Subchondral-derived osteoblasts expressed highest *VEGF-A* mRNA levels in both OA and OP groups; greater by 48 % ($p < 0.05$) and 68 % ($p < 0.05$) in OA, and by 21 % ($p < 0.05$) and 30 % ($p < 0.05$) compared to trabecular and cortical bone osteoblasts in OP, respectively (Fig. 7a,b). *VEGF-A*₁₆₅ protein levels in the medium conditioned by osteoblasts from different bone type origins followed similar patterns, with subchondral types consistently releasing highest levels in OA group (Fig. 7c). Subchondral-derived osteoblasts from OP patients demonstrated greatest *VEGF-A*₁₆₅ release and least from trabecular bone osteoblasts (Fig. 7d). Our

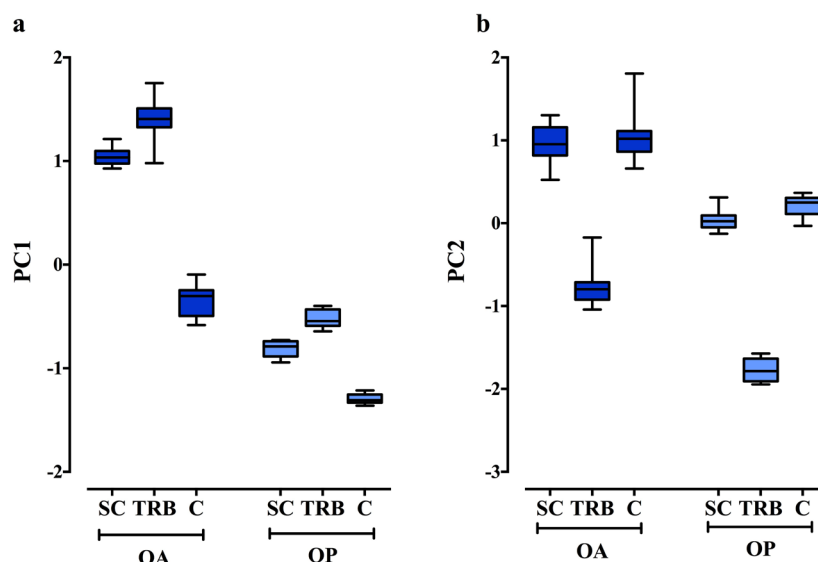


Fig. 8. Box plots illustrating PC1(a) and PC2(b) (summarising the 16 parameters measured) demonstrating the similarities and differences between OA ($n = 5$ donors) (dark blue boxes) and OP ($n = 4$ donors) (light blue boxes) and the three respective bone types.

pilot studies using osteoblasts from a single set of normal bone samples showed that these osteoblasts produced (Fig. 9I,m) levels of VEGF-A₁₆₅ release that was similar to OA (greatest in subchondral bone osteoblasts) and greater than in osteoblasts, from all three bone-types, in the OP group.

Principal component analysis

PCA is used to identify the main directions in which a dataset varies; the first PC accounts for as much variability in the entire data as possible, and each succeeding component accounts, in turn, for the highest variance possible that is unrelated to any preceding component. To better demonstrate significance in our data, we have therefore applied PCA to the entire data-set (16 variables). This discloses 2 components that explain 56 % and 29 % of all variation in the data. The component loading (Table 3) shows that the first component correlated most with TNAP mRNA and activity, VEGF-A mRNA and release levels, *RUNX2*, *SP7*, *BSP-II* and *BGLAP* mRNA levels and less contribution from *TNFRSF11B*, *TNFSF11*, *TNFRSF11B/TNFSF11* ratio and cell number (these 3 parameters were more correlated to component 2). For the first component the patterns between the OA and OP groups across bone types are similar, however, the difference between OA subchondral and trabecular osteoblasts compared to cortical osteoblasts was much greater than in the counterpart osteoblasts from the OP group ($p < 0.0001$ for interactions between bone types and patient groups) (Figure 8a). For the second component, differences exist between OA and OP groups ($p < 0.0001$) and osteoblasts from trabecular type bone are different from both subchondral and cortical osteoblasts ($p < 0.0001$ for both comparisons), however no significant differences were observed between the subchondral and cortical osteoblasts in both patient groups ($p = 0.078$) (Figure 8b).

Table 3. Table illustrating the ‘component loading matrix’ for the 16 variables tested. The values for component loading are analogous to correlation coefficients.

Component matrix	Components		
	PC1	PC2	
TNAP activity (OM+)	0.976	0.149	
<i>Runx-2</i> mRNA	0.925	-0.018	
TNAP activity basal	0.924	-0.246	
<i>TNAP</i> mRNA 7 days	0.912	-0.308	
<i>BGLAP</i> mRNA	0.898	0.261	
<i>TNAP</i> mRNA 24 hours	0.866	-0.402	
<i>TNAP</i> mRNA 14days	0.783	-0.526	
<i>TNFRSF11B</i> mRNA	0.776	-0.531	
VEGF-A release	0.760	0.583	
<i>VEGF-A</i> mRNA	0.748	0.366	
<i>SP7</i> mRNA	-0.666	-0.615	
<i>BSP-II</i> mRNA	0.575	-0.302	
<i>TNFRSF11B/TNFSF11</i> mRNA ratio	-0.224	0.939	
<i>TNFSF11</i> mRNA	0.244	0.925	
Cell Numbers	0.424	0.824	
Component	Extraction Sums of Squared Loadings		
	Total	% of Variance	Cumulative %
PC1	8.468	56.456	56.456
PC2	4.328	28.855	85.311

Discussion

Little consideration has previously been given to the exact origin of cells used for *in vitro* characterisation of osteoblast behaviour or those that are used in comparing osteoblasts from distinct disease states. Our study is the first to compare the behaviour of osteoblasts derived from structurally distinct bone compartments, namely the subchondral, trabecular and cortical bone types. Our comparison of osteoblasts derived from these three bone types from singular skeletal vicinity within the same patient adds strength to the study, as does their examination in

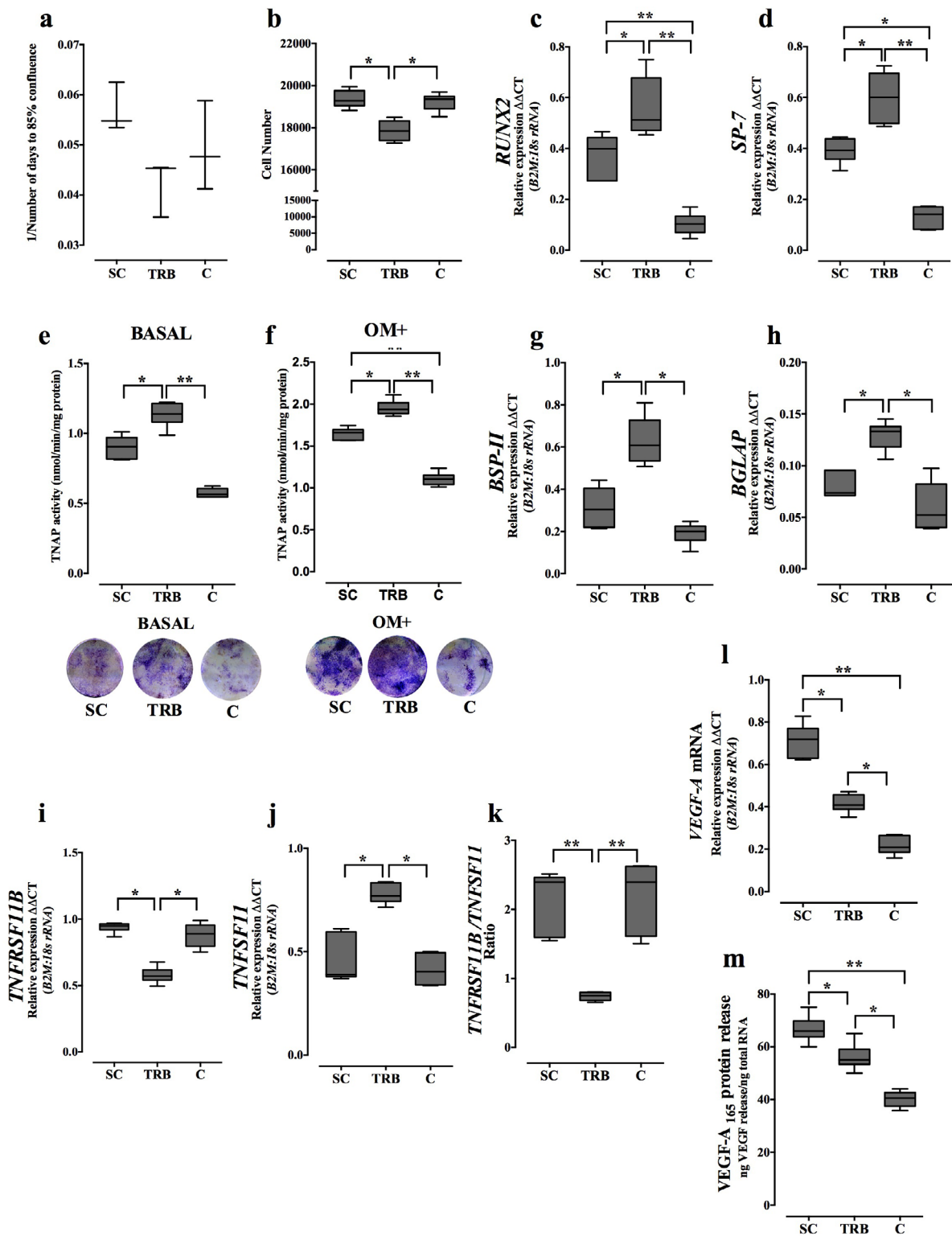


Fig. 9. Normal subchondral (SC), trabecular (TRB) and cortical (C) Human osteoblasts from a single patient exhibit modified growth characteristics. Panel **a**: rate of OB growth from specific types of bone explant (to 85 % confluence). Panel **b**: OB cell growth from different bone types over 10 days measured by crystal violet staining and DAPI nuclear counting. Results are expressed as mean and 95 % CI. Panel **c**, **d**: Osteogenic gene expression in osteoblast derived from different bone types in normal human patients. *RUNX-2* and *SP-7*, mRNA expression levels expressed as the mean expression relative to the index of β_2 -microglobulin: *18s rRNA* in arbitrary units and 95 % CI. Panel **e**, **f**: Alkaline phosphatase activity in normal human osteoblasts from diverse bone types under basal and induced osteogenic conditions measured by quantitation of alkaline phosphatase activity. Representative images of ALP activity by staining with fast blue in human osteoblasts under basal and osteogenic conditions are presented beneath. Panel **g**, **h**: Osteoblast maturation-related gene expression in osteoblast derived from different bone types in normal human patients. *BSP-II* and *BGLAP* mRNA expression levels expressed as the mean expression relative to the index of β_2 -microglobulin: *18s rRNA* in arbitrary units and 95 % CI. Panel **i**, **j**, **k**: *TNFRSF11B / TNFSF11* mRNA expression levels expressed as the mean expression relative to the index of β_2 -microglobulin: *18s rRNA* in arbitrary units and 95 % CI. Panel **l**, **m**: *VEGF-A* mRNA levels and protein release in osteoblasts derived from different bone types in normal human patient samples. Results are expressed as mean and 95 % CI. * and ** indicates *p*-values less than 0.05 and 0.01 respectively compared between osteoblast types.

both OA and OP patient groups. We show specific bone type-related differences in growth, differentiation capacity and angiogenic potential of isolated osteoblasts maintained *in vitro* as well as a preservation of many such bone type-related differences in bone from both OA and OP patient groups. We find that osteoblasts from trabecular bone consistently show slower proliferation, but higher *RUNX2*, *SP7* and *BSP-II* mRNA levels, *TNAP* mRNA and protein activity, and lower *TNFRSF11B*:*TNFSF11* mRNA ratios compared to those from subchondral and cortical bone. Another consistent bone type-related difference are the higher levels of *VEGF-A* mRNA and protein release by subchondral osteoblasts, implying more intimate vascular relationships for this bone type. Bone type-related behaviours were not, however conserved in OP and OA for all markers, with highest *BGLAP* mRNA levels in subchondral osteoblasts in OA and in trabecular osteoblasts in OP samples. Our data support inherent distinction in human osteoblasts from different bone types, likely due to positional or cellular progenitor origins and highlight the need to carefully select bone types when comparing osteoblasts in specific disease states.

Use of osteoblasts derived by primary outgrowth from bone samples is a vital component in bone biology studies (Czekanska *et al.*, 2012). The method is most broadly applied to isolate osteoblasts from non-diseased or from neonatal murine bone tissues, which multiply to achieve outgrowth rapidly. Cells derived by outgrowth or by enzyme digestion are heterogeneous, consisting predominantly of early osteoblasts that show accelerated maturation (with matrix formation, mineralisation and osteogenic markers) in response to exogenous glucocorticoids, vitamin D or bone morphogenic proteins (Aubin *et al.*, 1995; Beresford *et al.*, 1993; Declercq *et al.*, 2004; Lian and Stein, 1995; Liu *et al.*, 1994; Liu *et al.*, 1997; Siggelkow *et al.*, 1999; Wong *et al.*, 1990). Attainment of osteoblast confluence is significantly slower from the aged and diseased human bone samples used herein, than in other systems (Czekanska *et al.*, 2012; Perinpanayagam *et al.*, 2001; Siggelkow *et al.*, 1999), yet is nonetheless comparable with outgrowth kinetics described previously in similar aged human bone samples (Couchourel *et al.*, 2009; Couchourel D and Delalandre A, 2008; Hilal *et al.*, 1998; Hilal *et al.*, 2001; Massicotte *et al.*, 2002; Tat *et al.*, 2008). It is therefore striking and somewhat discordant with popular dogma (Dodds *et al.*, 1989; Dodds *et al.*, 1990; Varanasi *et al.*, 2010) that we find initial osteoblast explant outgrowth to be slower in trabecular than in subchondral or cortical type bone. This bone type-related difference is unlikely due to a common underpinning disease mechanism as it is found in both OA and OP samples and in the samples from the single normal patient. While we cannot rule out whether these differences might additionally involve differential rates of apoptosis, our examination of growth differences, using direct cell counting and crystal violet staining of adherent viable cells after seeding at identical cell densities (Fig. 1b), demonstrate consistent trends in relative growth in the different bone types in OA and OP samples. These latter studies, where cell numbers were initially matched in cultures from all three bone types make it unlikely that

divergent growth rates are due to inherent differences in bulk cellularity of the samples of these bone types with differing macrostructures, as remarkably similar inferiority in osteoblast growth is observed in trabecular-derived cells. Our findings are therefore consistent with the notion that primary osteoblasts derived by outgrowth from bone explants may not always be homologous and that their behaviour relies on functional and structural differences of their *in vivo* bone type origins.

These bone type-related cell differences may impact on physiological behaviour of osteoblasts *in situ* and consideration of bone's anabolic response to loading is perhaps particularly pertinent. It has for example been reported that oestrogen receptors appear to serve different roles in cortical and cancellous bone responses to loading in female and male mice (Saxon *et al.*, 2012). We and others have also reported dissimilar *in vivo* loading responses in cortical and trabecular bone with ageing (De Souza *et al.*, 2005; Willie *et al.*, 2013). However, as these studies cannot calibrate for load-engendered strain in trabecular compartments it remains impossible to know whether these discrepant responses are due to differing inherent sensitivity to the load stimulus or instead reflect different levels of strain exposure. Comparison of several early responses to identical strains have, however, reported divergent *in vitro* behaviour in osteoblasts derived from calvaria and ulna, suggesting that inherent differences in strain sensitivity may exist (Rawlinson *et al.*, 1995). More exploration is clearly required in order to establish whether bone type-related cell behaviours we describe, underpin differences in how bone compartments respond to anabolic stimuli in the physiological context.

There are several possible explanations for these inherent bone type-related differences in growth dynamics. Trabecular, cortical and subchondral bone clearly provide divergent topographies. Our studies do not allow us to estimate whether divergent *in vivo* architectures exert an influence on the osteoblasts derived, but 'compact' morphology of cortical and subchondral bone appears to endow greater proliferative capacity. If so, the underpinning mechanisms are retained even upon *in vitro* sub-seeding. Alternatively, trabecular-derived osteoblasts may reach a senescent state sooner, due to inherent differences in their 'Hayflick limit' (the number of times a cell population will divide until cell division is arrested; Hayflick, 1965). This might also explain the relative deficiency in osteoblasts derived from OP *versus* OA patients (evident in each of the three bone types) and also the relative exuberance of growth in osteoblasts derived from each of the bone types from the normal patient. This is intriguing because it indicates that regardless of the bone type sampled, OP osteoblasts exhibit a relative deficit in cell growth compared with OA (or the single normal samples), suggesting that this may reflect a widespread underpinning OP disease mechanism. Chronological ageing is also known to increase cellular senescence (Wagner *et al.*, 2009) and others have shown that osteoblast growth declines with age in primary bone cells and stromal cells (Lajeunesse, 2002; Quarto *et al.*, 1995; Zhang *et al.*, 2008). Our data are also in line with studies by Giner *et al.* (Giner *et al.*, 2009) showing that osteoblasts derived from OP patients exhibit

slower proliferation than those from OA patients and consistent with another study demonstrating their deficient attachment to tissue culture plastic when compared *in vitro* (Perinpanayagam *et al.*, 2001). Such patient-related differences do not however explain the consistent bone type-related divergence in growth exhibited by osteoblasts based upon their trabecular, subchondral and cortical bone origins. They are, however, in some agreement with additional studies demonstrating osteoblast heterogeneity in bone tissue (Dodds *et al.*, 1989; Dodds *et al.*, 1990) and bone cells extracted from different bone types and anatomical locations (Mcduffee *et al.*, 2006; Ninomiya *et al.*, 1990).

These positional or progenitor origins may also explain the bone type-related differences in differentiation potential we observed. We found that osteoblasts with trabecular origins exhibited greater *RUNX2*, *SP7* and *BSP-II* mRNA levels and TNAP activity than subchondral or cortical type osteoblasts. Our study also evaluates the behaviour of subchondral-derived osteoblasts. Akin to trabecular bone osteoblasts, osteoblasts from subchondral type bone exhibited higher *RUNX2*, *SP7* and *BSP-II* mRNA expression than cortical osteoblasts, but in contrast also displayed correspondingly high growth rates. Although expressed by other cells types where their functions remain incompletely defined (Choi *et al.*, 2001; Jeong *et al.*, 2008), *RUNX2* and *SP7* are considered master regulators of osteoblast differentiation (Ducy *et al.*, 1997; Hartmann, 2009; Komori *et al.*, 1997; Komori, 2006). Our study emphasises divergent *RUNX2* and *SP7* expression levels in osteoblasts from different bone types, which imply that subchondral osteoblasts possess greater inherent potential for *in vitro* growth and differentiation. Our data showing that levels of *TNAP* mRNA expression are maintained at 24 h, 7 days and 14 days post confluence, support retention of this inherent difference in osteoblasts from divergent bone types. We thenceforth maintained cells for 36 days in basal media and OM+ media and observed that trabecular osteoblasts exhibited greater ALP activities under basal and osteogenically stimulated conditions, further emphasising the inherent diversity in osteoblasts from these distinct bone types. Indeed, they are likely consistent with studies revealing different differentiation capacity in bone from neighbouring locations within single OA patient groups (Hilal *et al.*, 2001; Lavigne *et al.*, 2005; Westacott *et al.*, 1997) and with recent studies describing distinct function and molecular properties in human haematopoietic stem cells in trabecular bone compartments from those located deeper in the marrow (Guezguez *et al.*, 2013). Our studies highlight that osteoblasts from the different bone types showed matching disparity in both OA and OP patients. Furthermore, it is pertinent to stress that osteoblasts from OP patients exhibited a conserved deficiency in differentiation capacity, in each of the three bone types, when compared with either OA (or the single 'normal' patient); again indicating that OP may demonstrate systemic modification in bone cell function.

Previous studies using bone-seeking isotopes have led to a general acceptance that osteoblasts of trabecular bone have greater metabolic activity than those of the cortex and that this is retained *in vitro* due to the larger

surface areas from which they are derived (Varanasi *et al.*, 2010). Direct measurement of 'metabolic' activities of representative enzymes of the major oxidative pathways have shown that the reverse, in fact, pertained (Dodds *et al.*, 1989; Dodds *et al.*, 1990). Our data make the distinction between osteoblast growth and capacity of cells from dissimilar bone types to differentiate, demonstrating that the enhanced osteogenic markers and TNAP activity shown by osteoblasts from trabecular bone types is not necessarily allied to more rapid increases in cell number, which are evident in osteoblasts from subchondral bone types. These findings appear consistent with those of Solchaga *et al.* (Solchaga *et al.*, 1998) in which greater TNAP activity and significantly higher mineral deposition was observed in cells derived from marrow than periosteum of rabbit tibiae; it is tempting to speculate that osteoblasts from trabecular-type bone more closely resemble the former and cortical-type osteoblasts the latter, respectively. It may be possible that the data presented in this study suggest an inherent diversity within the progenitor cell pool in these diverse bone types, which would require further investigations. If such inherent diversity does indeed exist, our findings demonstrating deficient growth and differentiation capacity in samples from OP patients would be consistent with a widespread scarcity of such progenitors.

Studies using human diseased bone samples have limitations. Foremost is the paucity of age/gender matched control samples from healthy, normal bone for comparison. Our efforts to redress this have generated pilot data from one set of normal bone samples and whilst these support identical bone type-related divergence in osteoblast behaviour, it is vital they are confirmed in multiple samples if more general conclusions regarding the impact of our findings are to be more broadly appreciated. In addition, we also acknowledge the possibility that primary cell culture cannot necessarily guarantee that all of the cells derived from different bone types are exactly the same. However, given that the method employed for primary cell isolation/outgrowth from all three-bone types was identical, it is evident that the bone type-related differences in cell phenotype we have described highlight dissimilarities in their behaviour. Another limitation arises due to the slow growth and restricted cell numbers available from these samples. This restricts scope to perform analyses at multiple *in vitro* time-points and makes it unfeasible to use alternative methods, such as FACS analysis to quantify live/dead cells or surface markers. Direct observations during the cell growth phase nonetheless disclosed no obvious signs of apoptosis such as cell blebbing, shrinking or detachment. Another limitation is the lack of capacity to correlate our observations with one of the most important features of osteoblasts *in vitro*, namely their ability to deposit mineralised extracellular matrix. Our pilot studies showed that this capacity for mineralisation is highly compromised in osteoblasts derived from OA and OP bone samples, with little mineralisation even after 56 days (data not shown; compared with overt mineralisation by 36 days in normal human cultures). This deficiency in mineralisation was greater in OP patient cells compared to OA. Our findings are in agreement with studies by Siggelkow and colleagues (Siggelkow *et al.*, 1999)

and those showing that mineralisation in OA derived subchondral osteoblasts is compromised compared to those from normal (Couchourel *et al.*, 2009). This disease-related lack of mineralisation may be compounded by the advanced age of patients acting as bone donors in this study, and with respect to OP osteoblasts it may be a consequence of the disease and further elucidation of the underpinning mechanisms would be required.

Somewhat surprisingly the only significant deviation from the consistent bone type-related osteoblast differentiation markers seen in OP and OA groups was the elevated *BGLAP* mRNA levels in subchondral osteoblasts in the OA patients and in the trabecular osteoblasts of patients with OP. The latter is completely in line with the relatively elevated levels of all other markers of osteoblast differentiation measured in the trabecular osteoblast of OP patients, but the former raises an interesting paradox particular to OA patients, suggesting that this is more likely disease-specific. This is supported by previous studies demonstrating elevated *BGLAP* mRNA levels in subchondral bone regions in OA patients, which is further exaggerated in sclerotic (*vs.* non sclerotic) regions (Sanchez *et al.*, 2008). It is likely that application of similar approaches, restricting the study of osteoblast behaviour in disease to only direct comparison within single, specific bone types, is likely to reduce experimental inhomogeneity and speed identification of underpinning disease mechanisms.

This is perhaps accentuated by studies distinguishing two separate groups of subchondral bone OA osteoblasts: 'low' – which resemble normal osteoblasts – and 'high' osteoblasts with corresponding prostaglandin E_2 and IL-6 levels (Hilal *et al.*, 2001; Massicotte *et al.*, 2002). More recent data indicate a close relationship between these OA subchondral osteoblasts and the OPG/RANK/RANKL system, linking to structural bone changes in OA (Tat *et al.*, 2008; Tat *et al.*, 2009). It was found that 'low' osteoblasts express depleted *TNFRSF11B*, but high *TNFSF11* levels, whereas 'high' OA osteoblasts express the reverse (Tat *et al.*, 2008). Consideration of these findings in the light of our own, which shows that trabecular type osteoblasts express lower *TNFRSF11B:TNFSF11* ratios compared to subchondral and cortical osteoblasts, implies that 'low' – more normal – subchondral osteoblasts show greater resemblance with those derived from trabecular compartments. It is also pertinent that lower osteoblast *TNFRSF11B:TNFSF11* ratios (observed in OP osteoblasts) are likely to promote bone resorption assuming correlative post-translational trends, suggesting that such remodelling activities will predominate in trabecular type bone and will also be more marked in bone from OP than OA (and normal) patient groups. RANKL and OPG protein levels were not measured herein, however previous studies have demonstrated close correlation of osteogenic protein expression to mRNA levels (Born *et al.*, 2009; Deyama *et al.*, 2000; Hofbauer *et al.*, 1999; Rickard *et al.*, 1996; Shea *et al.*, 2000).

The possibility that osteoblasts from subchondral, cortical and trabecular bone types might exert differential recruitment of osteoclasts from the vasculature, prompted

studies into their potential capacity to also control angiogenesis. Osteogenesis and angiogenesis are closely related processes that are intimately linked during bone development, growth, remodelling and fracture repair (Clarkin *et al.*, 2008a; Clarkin and Gerstenfeld, 2013; Clarkin and Olsen, 2010). VEGF has emerged as an essential component promoting this relationship (Fazzalari, 2011; Hankenson *et al.*, 2011; Marsell and Einhorn, 2011) and its intracellular effects have recently been shown to promote osteogenesis at the expense of adipogenesis (Liu *et al.*, 2012). We therefore measured their relative mRNA levels and release of secreted VEGF (Clarkin *et al.*, 2008a). This revealed a clear hierarchy in *VEGF-A* mRNA levels in OA and OP (and normal samples from a single patient) bone types, with highest levels in subchondral, followed by trabecular and cortical-derived osteoblasts; it was also clear that OA consistently exceeded levels in OP patients (and more akin to normal). These data accord with those of Sanchez *et al.* (Sanchez *et al.*, 2008) and imply that osteoblasts from subchondral bone (amongst those examined herein) have the most intimate relationship with the vasculature, particularly in OA, which may contribute to osteochondral OA pathophysiology. The basis of the consistently lower bone type-matched VEGF mRNA (and protein) levels in OP samples is also intriguing and may reflect the greater susceptibility to fracture in OP than OA patients; this however requires further exploration. VEGF-A₁₆₅ protein levels in conditioned media from osteoblasts also generally match those for mRNA expression, with one exception. Thus, while *VEGF-A* mRNA levels were higher in trabecular than cortical-derived osteoblasts from OP patients, relative VEGF-A₁₆₅ protein levels were significantly lower. This suggests some impairment in VEGF translation or post-translational VEGF degradation in OP trabecular bone osteoblasts, but is nonetheless consistent with the altered proangiogenic signalling of bone reported in these patients (Burkhardt *et al.*, 1987; Ding *et al.*, 2011; Xia *et al.*, 2012). Indeed, it has been shown that primary OA and OP osteoblasts express differential *VEGF-A* levels (Corrado *et al.*, 2013), which are in line with our findings. The demonstration of elevated *VEGF-A* expression in metaphyseal *versus* diaphyseal periosteal locations in osteoporotic rats (Fan *et al.*, 2010) further illustrates the requirement to explore variations in the communication by osteoblasts to the vasculature, which is critical for bone maintenance and repair, in different bone types. Since VEGF is central to coupling angiogenesis in bone healing, our data raise the intriguing possibility that osteoblasts from different bone types exhibit divergent potential for VEGF-mediated crosstalk with the vasculature, with those in subchondral bone having a relative advantage (Fazzalari, 2011; Report of a WHO study Group, 1994; Sarahrudi *et al.*, 2009).

Our study identifies basal differences in primary osteoblast behaviour that are linked to the diversity in the type, or category of bone. We cannot be sure that these bone type-related attributes are necessarily replicated at all other skeletal locations or are conserved in all species. They are, however, reinforced significantly by a preservation of many of these differences in the distinct OA and OP patient

groups (and a single set of samples from a normal patient) examined and this illustrates that these characteristics do not simply reflect disease manifestation but are rather bone type-related in human specimens.

Conclusion

Although the importance of our findings would be greatly extended if similar bone type-related behaviours were confirmed, with the inclusion of more replicates of normal human bone osteoblasts, our data support the hypothesis that osteoblasts in trabecular, subchondral and cortical bone regions of the human skeleton have inherent, programmed diversity in their behaviour. It is tempting to speculate that this may extend to definable divergence in their responses to soluble and mechanical extracellular cues and systemic factors, and that such elucidation will allow for specific bone type-selective regulation. This raises a major caveat in our study; as it is possible osteoblasts from these different bone types only exhibit such divergence in behaviour in human shoulder joint samples. This accentuates a need for further studies to address whether this paradigm is extended to other skeletal elements. It is also possible that the differences uncovered by our studies are related to the developmental origins of the osteoblasts in these types of bones (Rawlinson *et al.*, 2009). Our studies have shown that primary osteoblasts derived from diverse trabecular, cortical and subchondral bone types from within a single anatomical location have distinctive growth, differentiation, remodelling and pro-angiogenic characteristics, which may underpin some of the divergent behaviour of bone at these sites. Our studies also reveal that osteoblasts derived from all three types of bone from OP patients exhibit diminished growth, differentiation and pro-angiogenic signalling than counterparts from OA patients, suggesting that such deficit may be systemic, rather than local. With further studies to validate these conclusions, this work may also provide further rationale for development and design of new implants that target specific bone types in order to avoid complications associated with use of long stemmed prosthesis and their redesign to harness greatest pro-angiogenic capacity and fracture healing. Further investigations are clearly required to explore this potential.

Acknowledgments

Orthopaedic Research UK (ORUK) gracefully funded this project. We would thank all the surgical teams at St Mary's Hospital, Charing Cross Hospital and Chelsea Westminster Hospital for their assistance in helping with sample collections. We would like to thank Prof Adrienne Flanagan, Mr Rob Pollock and the Biobank at the Royal National Orthopaedic Hospital for the provision and assistance in obtaining normal tissue samples. Finally we gracefully acknowledge and appreciate Yu-Mei Chang for her expert assistance with statistical testing.

References

- Aerssens J, Boonen S, Joly J, Dequeker J (1997) Variations in trabecular bone composition with anatomical site and age: potential implications for bone quality assessment. *J Endocrinol* **155**: 411-421.
- Akintoye SO, Lam T, Shi S, Brahim J, Collins MT, Robey PG (2006) Skeletal site-specific characterization of orofacial and iliac crest human bone marrow stromal cells in same individuals. *Bone* **38**: 758-768.
- Atkins GJ, Kostakis P, Pan B, Farrugia A, Gronthos S, Evdokiou A, Harrison K, Findlay DM, Zannettino ACW (2003) RANKL expression is related to the differentiation state of human osteoblasts. *J Bone Miner Res* **18**: 1088-1098.
- Atkins GJ, Rowe PS, Lim HP, Welldon KJ, Ormsby R, Wijenayaka AR, Zelenchuk L, Evdokiou A, Findlay DM (2011) Sclerostin is a locally acting regulator of late-osteoblast/preosteocyte differentiation and regulates mineralization through a MEPE-ASARM-dependent mechanism. *J Bone Miner Res* **26**: 1425-1436.
- Aubin JE, Lui F, Malaval L, Gupta AK (1995) Osteoblast and chondroblast differentiation. *Bone* **17 Suppl 2**: 77S-83S.
- Beresford JN, Graves SE, Smoothy CA (1993) Formation of mineralized nodules by bone derived cells *in vitro*: a model of bone formation? *Am J Med Genet* **45**: 163-178.
- Bohsali KI, Wirth MA, Rockwood Jr. CA (2006) Complications of total shoulder arthroplasty. *J Bone Joint Surg Am* **88**: 2279-2292.
- Born A-K, Rottmar M, Lischer S, Pleskova M, Bruinink A, Maniura-Weber K (2009) Correlating cell architecture with osteogenesis: first steps towards live single cell monitoring. *Eur Cell Mater* **18**: 49-62.
- Bultink IEM, Lems WF (2013) Osteoarthritis and osteoporosis: what is the overlap? *Curr Rheumatol Rep* **15**: 328.
- Burkhardt R, Kettner G, Böhm W, Schmidmeier M, Schlag R, Frisch B, Mallmann B, Eisenmenger W, Gilg T (1987) Changes in trabecular bone, hematopoiesis and bone marrow vessels in aplastic anemia, primary osteoporosis, and old age: a comparative histomorphometric study. *Bone* **8**: 157-164.
- Bustin SA, Benes V, Garson JA, Hellemans J, Huggett J, Kubista M, Mueller R, Nolan T, Pfaffl MW, Shipley GL, Vandesompele J, Wittwer CT (2009) The MIQE guidelines: minimum information for publication of quantitative real-time PCR experiments. *Clin Chem* **55**: 611-622.
- Candeliere GA, Liu F, Aubin JE (2001) Individual osteoblasts in the developing calvaria express different gene repertoires. *Bone* **28**: 351-361.
- Choi JY, Pratap J, Javed A, Zaidi SK, Xing L, Balint E, Dalamangas S, Boyce B, van Wijnen A, Lian JB, Stein JL, Jones SN, Stein GS (2001) Subnuclear targeting of Runx/Cbfa/AML factors is essential for tissue-specific differentiation during embryonic development. *Proc Natl Acad Sci U S A* **98**: 8650-8655.
- Clarkin CE, Allen S, Wheeler-Jones CP, Bastow ER, Pitsillides AA (2011) Reduced chondrogenic matrix accumulation by 4-methylumbelliferone reveals

the potential for selective targeting of UDP-glucose dehydrogenase. *Matrix Biol* **30**: 163-168.

Clarkin CE, Emery RJ, Pitsillides AA, Wheeler-Jones CPD (2008a) Evaluation of VEGF-mediated signaling in primary human cells reveals a paracrine action for VEGF in osteoblast-mediated crosstalk to endothelial cells. *J Cell Physiol* **214**: 537-544.

Clarkin CE, Garonna E, Pitsillides AA, Wheeler-Jones CPD (2008b) Heterotypic contact reveals a COX-2-mediated suppression of osteoblast differentiation by endothelial cells: a negative modulatory role for prostanooids in VEGF-mediated cell: cell communication? *Exp Cell Res* **314**: 3152-3161.

Clarkin CE, Gerstenfeld LC (2012) VEGF and bone cell signalling : an essential vessel for communication ? *Cell Biochem Funct* **31**: 1-11.

Clarkin C, Olsen BR (2010) On bone-forming cells and blood vessels in bone development. *Cell Metab* **12**: 314-316.

Corrado A, Neve A, Cantatore FP (2013) Expression of vascular endothelial growth factor in normal, osteoarthritic and osteoporotic osteoblasts. *Clin Exp Med* **13**: 81-84.

Couchourel D, Delalandre ALD (2008) Increased expression of Wnt inhibitory factors in subchondral osteoblasts from osteoarthritic patients could play a role in their abnormal phenotype and mineralization. *Ann Rheum Dis*, **67 suppl 2** : 98.

Couchourel D, Aubry I, Delalandre A, Lavigne M, Martel-Pelletier J, Pelletier J-P, Lajeunesse D (2009) Altered mineralization of human osteoarthritic osteoblasts is attributable to abnormal type I collagen production. *Arthritis Rheum* **60**: 1438-1450.

Czekanska EM, Stoddart MJ, Richards RG, Hayes JS (2012) In search of an osteoblast cell model for *in vitro* research. *Eur Cell Mater* **24**: 1-17.

Declercq H, Van Den Vreken N, De Maeyer E, Verbeeck R, Schacht E, De Ridder L, Cornelissen M (2004) Isolation, proliferation and differentiation of osteoblastic cells to study cell/biomaterial interactions: comparison of different isolation techniques and source. *Biomaterials* **25**: 757-768.

Dequeker J, Burssens A, Creyten G, Bouillon R (1975) Ageing of bone: its relation to osteoporosis and osteoarthritis in postmenopausal women. *Front Horm Res* **3**: 116-130.

Deyama Y, Takeyama S, Koshikawa M, Shirai Y, Yoshimura Y, Nishikata M, Suzuki K, Matsumoto A (2000) Osteoblast maturation suppressed osteoclastogenesis in coculture with bone marrow cells. *Biochem Biophys Res Commun* **274**: 249-254.

Dillon JP, Waring-Green VJ, Taylor AM, Wilson PJM, Birch M, Gartland A, Gallagher JA (2012) Primary human osteoblast cultures. *Methods Mol Biol* **816**: 3-18.

Ding M, Odgaard A, Linde F, Hvid I (2002) Age-related variations in the microstructure of human tibia cancellous bone. *J Orthop Res* **20**: 615-621.

Ding W-G, Wei Z-X, Liu J-B (2011) Reduced local blood supply to the tibial metaphysis is associated with ovariectomy-induced osteoporosis in mice. *Connect Tissue Res* **52**: 25-29.

Dodd AW, Syddall CM, Loughlin J (2012) A rare variant in the osteoarthritis-associated locus GDF5 is

functional and reveals a site that can be manipulated to modulate GDF5 expression. *Eur J Hum Genet* **21**: 517-521.

Dodds RA, Emery RJ, Klenerman L, Chayen J, Bitensky L (1989) Comparative metabolic enzymatic activity in trabecular as against cortical osteoblasts. *Bone* **10**: 251-254.

Dodds RA, Emery RJ, Klenerman L, Chayen J, Bitensky L (1990) Selective depression of metabolic activities in cortical osteoblasts at the site of femoral neck fractures. *Bone* **11**: 157-161.

Ducy P, Zhang R, Geoffroy V, Ridall AL, Karsenty G (1997) *Osf2/Cbfa1*: a transcriptional activator of osteoblast differentiation. *Cell* **89**: 747-754.

Estrada K, Styrkarsdottir U, Evangelou E, Hsu Y-H, Duncan EL, Ntzani EE, Oei L, Albagha OME, Amin N, Kemp JP, Koller DL, Li G, Liu C-T, Minster RL, Moayyeri A, Vandenput L, Willner D, Xiao S-M, Yerges-Armstrong LM, Zheng H-F, Alonso N, Eriksson J, Kammerer CM, Kaptoge SK, Leo PJ, Thorleifsson G, Wilson SG, Wilson JF, Aalto V, Alen M, Aragaki AK, Aspelund T, Center JR, Dailiana Z, Duggan DJ, Garcia M, Garcia-Giralt N, Giroux S, Hallmans G, Hocking LJ, Husted LB, Jameson KA, Khusainova R, Kim GS, Kooperberg C, Koromila T, Kruk M, Laaksonen M, Lacroix AZ, Lee SH, Leung PC, Lewis JR, Masi L, Mencej-Bedrac S, Nguyen T V, Nogues X, Patel MS, Prezelj J, Rose LM, Scollen S, Siggeirsdottir K, Smith AV, Svensson O, Trompet S, Trummer O, van Schoor NM, Woo J, Zhu K, Balcels S, Brandi ML, Buckley BM, Cheng S, Christiansen C, Cooper C, Dedoussis G, Ford I, Frost M, Goltzman D, González-Macías J, Kähönen M, Karlsson M, Khusnutdinova E, Koh J-M, Kollia P, Langdahl BL, Leslie WD, Lips P, Ljunggren Ö, Lorenc RS, Marc J, Mellström D, Obermayer-Pietsch B, Olmos JM, Pettersson-Kymmer U, Reid DM, Riancho JA, Ridker PM, Rousseau F, Slagboom PE, Tang NLS, Urreizti R, Van Hul W, Viikari J, Zarrabeitia MT, Aulchenko YS, Castano-Betancourt M, Grundberg E, Herrera L, Ingvarsson T, Johannsdottir H, Kwan T, Li R, Luben R, Medina-Gómez C, Palsson ST, Reppe S, Rotter JI, Sigurdsson G, van Meurs JBJ, Verlaan D, Williams FMK, Wood AR, Zhou Y, Gautvik KM, Pastinen T, Raychaudhuri S, Cauley JA, Chasman DI, Clark GR, Cummings SR, Danoy P, Dennison EM, Eastell R, Eisman JA, Gudnason V, Hofman A, Jackson RD, Jones G, Jukema JW, Khaw K-T, Lehtimäki T, Liu Y, Lorentzon M, McCloskey E, Mitchell BD, Nandakumar K, Nicholson GC, Oostra BA, Peacock M, Pols HAP, Prince RL, Raitakari O, Reid IR, Robbins J, Sambrook PN, Sham PC, Shuldiner AR, Tylavsky FA, van Duijn CM, Wareham NJ, Cupples LA, Econs MJ, Evans DM, Harris TB, Kung AWC, Psaty BM, Reeve J, Spector TD, Streeten EA, Zillikens MC, Thorsteinsdottir U, Ohlsson C, Karasik D, Richards JB, Brown MA, Stefansson K, Uitterlinden AG, Ralston SH, Ioannidis JPA, Kiel DP, Rivadeneira F (2012) Genome-wide meta-analysis identifies 56 bone mineral density loci and reveals 14 loci associated with risk of fracture. *Nat Genet* **44**: 491-501.

Fan W, Bouwense SAW, Crawford R, Xiao Y (2010) Structural and cellular features in metaphyseal and diaphyseal periosteum of osteoporotic rats. *J Mol Histol* **41**: 51-60.

- Fazzalari NL (2011) Bone fracture and bone fracture repair. *Osteoporos Int* **22**: 2003-2006.
- Galea GL, Meakin LB, Sugiyama T, Zebda N, Sunter A, Taipaleenmaki H, Stein GS, van Wijnen AJ, Lanyon LE, Price JS (2013) Estrogen receptor α mediates proliferation of osteoblastic cells stimulated by estrogen and mechanical strain, but their acute down-regulation of the Wnt antagonist Sost is mediated by estrogen receptor β . *J Biol Chem* **288**: 9035-9048.
- Gallagher JA, Gundle R, Beresford JN (1996) Isolation and culture of bone-forming cells (osteoblasts) from human bone. *Methods Mol Med* **2**: 233-262.
- Gartland A, Rumney RMH, Dillon JP, Gallagher JA (2012) Isolation and culture of human osteoblasts. *Methods Mol Biol* **806**: 337-355.
- Giner M, Rios MJ, Montoya MJ, Vázquez MA, Naji L, Pérez-Cano R (2009) RANKL/OPG in primary cultures of osteoblasts from post-menopausal women. Differences between osteoporotic hip fractures and osteoarthritis. *J Steroid Biochem Mol Biol* **113**: 46-51.
- Grigoriadis AE, Heersche JN, Aubin JE (1988) Differentiation of muscle, fat, cartilage, and bone from progenitor cells present in a bone-derived clonal cell population: effect of dexamethasone. *J Cell Biol* **106**: 2139-2151.
- Guezguez B, Campbell CJV, Boyd AL, Karanu F, Casado FL, Di Cresce C, Collins TJ, Shapovalova Z, Xenocostas A, Bhatia M (2013) Regional localization within the bone marrow influences the functional capacity of human HSCs. *Cell Stem Cell* **13**: 175-189.
- Hankenson KD, Dishowitz M, Gray C, Schenker M (2011) Angiogenesis in bone regeneration. *Injury* **42**: 556-561.
- Hartmann C (2009) Transcriptional networks controlling skeletal development. *Curr Opin Genet Dev* **19**: 437-443.
- Hayflick L (1965) The limited *in vitro* lifetime of human diploid cell strains. *Exp Cell Res* **37**: 614-636.
- Hilal G, Martel-Pelletier J, Pelletier JP, Ranger P, Lajeunesse D (1998) Osteoblast-like cells from human subchondral osteoarthritic bone demonstrate an altered phenotype *in vitro*: possible role in subchondral bone sclerosis. *Arthritis Rheum* **41**: 891-899.
- Hilal G, Massicotte F, Martel-Pelletier J, Fernandes JC, Pelletier JP, Lajeunesse D (2001) Endogenous prostaglandin E2 and insulin-like growth factor 1 can modulate the levels of parathyroid hormone receptor in human osteoarthritic osteoblasts. *J Bone Miner Res* **16**: 713-721.
- Hildyard JCW, Wells DJ (2014) Identification and validation of quantitative PCR reference genes suitable for normalizing expression in normal and dystrophic cell culture models of myogenesis. *PLoS Curr* **6**: 1-23.
- Hofbauer LC, Gori F, Riggs BL, Lacey DL, Dunstan CR, Spelsberg TC, Khosla S (1999) Stimulation of osteoprotegerin ligand and inhibition of osteoprotegerin production by glucocorticoids in human osteoblastic lineage cells: potential paracrine mechanisms of glucocorticoid-induced osteoporosis. *Endocrinology* **140**: 4382-4389.
- Jagodzinski M, Drescher M, Zeichen J, Hankemeier S, Krettek C, Bosch U, van Griensven M (2004) Effects of cyclic longitudinal mechanical strain and dexamethasone on osteogenic differentiation of human bone marrow stromal cells. *Eur Cell Mater* **7**: 35-41.
- Jeong JH, Jin JS, Kim HN, Kang SM, Liu JC, Lengner CJ, Otto F, Mundlos S, Stein JL, van Wijnen AJ, Lian JB, Stein GS, Choi J-Y (2008) Expression of Runx2 transcription factor in non-skeletal tissues, sperm and brain. *J Cell Physiol* **217**: 511-517.
- Jiang LS, Zhang ZM, Jiang SD, Chen WH, Dai LY (2008) Differential bone metabolism between postmenopausal women with osteoarthritis and osteoporosis. *J Bone Min Res* **23**: 475-483.
- Kanis JA, Johnell O (2011) Osteoporosis and the burden of osteoporosis-related fractures. *Am J Manag Care* **22**: S164-S169.
- Kiselak EA, Shen X, Song J, Gude DR, Wang J, Brody SL, Strauss JF, Zhang Z (2010) Transcriptional regulation of an axonemal central apparatus gene, sperm-associated antigen 6, by a SRY-related high mobility group transcription factor, S-SOX5. *J Biol Chem* **285**: 30496-30505.
- Komori T, Yagi H, Nomura S, Yamaguchi a, Sasaki K, Deguchi K, Shimizu Y, Bronson RT, Gao YH, Inada M, Sato M, Okamoto R, Kitamura Y, Yoshiki S, Kishimoto T (1997) Targeted disruption of Cbfa1 results in a complete lack of bone formation owing to maturational arrest of osteoblasts. *Cell* **89**: 755-764.
- Komori T (2006) Regulation of osteoblast differentiation by transcription factors. *J Cell Biochem* **99**: 1233-1239.
- Kwan Tat S, Lajeunesse D, Pelletier J-P, Martel-Pelletier J (2010) Targeting subchondral bone for treating osteoarthritis: what is the evidence? *Best Pract Res Clin Rheumatol* **24**: 51-70.
- Lajeunesse D (2002) Altered subchondral osteoblast cellular metabolism in osteoarthritis: cytokines, eicosanoids, and growth factors. *J Musculoskelet Neuronal Interact* **2**: 504-506.
- Lanyon LE (1984) Functional strain as a determinant for bone remodeling. *Calcif Tissue Int* **36 Suppl 1**: S56-S61.
- Lavigne P, Benderdour M, Lajeunesse D, Reboul P, Shi Q, Pelletier J-P, Martel-Pelletier J, Fernandes JC (2005) Subchondral and trabecular bone metabolism regulation in canine experimental knee osteoarthritis. *Osteoarthritis Cartilage* **13**: 310-317.
- Li B, Marshall D, Roe M, Aspden RM (1999) The electron microscope appearance of the subchondral bone plate in the human femoral head in osteoarthritis and osteoporosis. *J Anat* **195**: 101-110.
- Lian JB, Stein GS (1995) Development of the osteoblast phenotype: molecular mechanisms mediating osteoblast growth and differentiation. *Iowa Orthop J* **15**: 118-140.
- Liu F, Malaval L, Aubin JE (1997) The mature osteoblast phenotype is characterized by extensive plasticity. *Exp Cell Res* **232**: 97-105.
- Liu F, Malaval L, Gupta AK, Aubin JE (1994) Simultaneous detection of multiple bone-related mRNAs and protein expression during osteoblast differentiation: polymerase chain reaction and immunocytochemical studies at the single cell level. *Dev Biol* **166**: 220-234.

- Liu Y, Berendsen AD, Jia S, Lotinun S, Baron R, Ferrara N, Olsen BR (2012) Intracellular VEGF regulates the balance between osteoblast and adipocyte differentiation. *J Clin Invest* **122**: 3101-3113.
- Livak KJ, Schmittgen TD (2001) Analysis of relative gene expression data using real-time quantitative PCR and the 2(-Delta Delta C(T)) Method. *Methods* **25**: 402-408.
- Lories RJU, Luyten FP (2012) Osteoarthritis, a disease bridging development and regeneration. *Bonekey Rep* **1**: 136.
- Lowry OH, Roberts NR, Hixon WS, Elizabeth J (1954) The quantitative histochemistry of the brain : II. Enzyme measurements. *J Biol Chem* **207**: 19-38.
- Marsell R, Einhorn TA (2011) The biology of fracture healing. *Injury* **42**: 551-555.
- Massicotte F, Lajeunesse D, Benderdour M, Pelletier J-P, Hilal G, Duval N, Martel-Pelletier J (2002) Can altered production of interleukin-1beta, interleukin-6, transforming growth factor-beta and prostaglandin E(2) by isolated human subchondral osteoblasts identify two subgroups of osteoarthritic patients. *Osteoarthr Cartil* **10**: 491-500.
- McDonald RS, Gupta S, Maclean M, Ramakrishnan P, Anderson JG, MacGregor SJ, Meek RMD, Grant MH (2013) 405 nm Light exposure of osteoblasts and inactivation of bacterial isolates from arthroplasty patients: potential for new disinfection applications? *Eur Cell Mater* **25**: 204-214.
- Mcduffee LA, Anderson GI, Wright GM, Ryan DAJ (2006) *In vitro* heterogeneity of osteogenic cell populations at various equine skeletal sites Résumé Specimen collection. *Can J Vet Res*: 277-284.
- Ninomiya JT, Tracy RP, Calore JD, Gendreau MA, Kelm RJ, Mann KG (1990) Heterogeneity of human bone. *J Bone Miner Res* **5**: 933-938.
- Nolan T, Hands RE, Bustin SA (2006) Quantification of mRNA using real-time RT-PCR **1**: 1559-1582.
- Oshina H, Sotome S, Yoshii T, Torigoe I, Sugata Y, Maehara H, Marukawa E, Omura K, Shinomiya K (2007) Effects of continuous dexamethasone treatment on differentiation capabilities of bone marrow-derived mesenchymal cells. *Bone* **41**: 575-583.
- Perinpanayagam H, Zaharias R, Stanford C, Brand R, Keller J, Schneider G (2001) Early cell adhesion events differ between osteoporotic and non-osteoporotic osteoblasts. *J Orthop Res* **19**: 993-1000.
- Pervaiz K, Cabezas A, Downes K, Santoni BG, Frankle MA (2013) Osteoporosis and shoulder osteoarthritis: incidence, risk factors, and surgical implications. *J Shoulder Elbow Surg* **22**: 1-8.
- Pfaffl MW (2001) A new mathematical model for relative quantification in real-time RT-PCR. *Nucleic Acids Res* **29**: e45.
- Poulet B, Ulici V, Stone TC, Pead M, Gburcik V, Constantinou E, Palmer DB, Beier F, Timmons JA, Pitsillides AA (2012) Time-series transcriptional profiling yields new perspectives on susceptibility to murine osteoarthritis. *Arthritis Rheum*. **64**: 3256-3266.
- Poulet B, De Souza R, Knights CB, Gentry C, Wilson AM, Bevan S, Chang YM, Pitsillides AA (2014) Modifications of gait as predictors of natural osteoarthritis progression in Str/Ort mice. *Arthritis Rheumatol* **66**: 1832-1842.
- Quarto R, Thomas D, Liang CT (1995) Bone progenitor cell deficits and the age-associated decline in bone repair capacity. *Calcif Tissue Int* **56**: 123-129.
- Rawlinson SCF, McKay IJ, Ghuman M, Wellmann C, Ryan P, Prajaneh S, Zaman G, Hughes FJ, Kingsmill VJ (2009) Adult rat bones maintain distinct regionalized expression of markers associated with their development. *PLoS One* **4**: e8358.
- Rawlinson SCF, Mosley JR, Suswillo RFL, Pitsillides AA, Lanyon LE (1995) Calvarial and limb bone cells in organ and monolayer culture do not show the same early responses to dynamic mechanical strain. *J Bone Miner Res* **10**: 1225-1232.
- Report of a WHO study Group (1994) Assessment of fracture risk and its application to screening for postmenopausal osteoporosis. *World Heal. Organ Tech Rep Ser* **843**: 1-129.
- Richards JB, Zheng H-F, Spector TD (2012) Genetics of osteoporosis from genome-wide association studies: advances and challenges. *Nat Rev Genet* **13**: 576-588.
- Rickard DJ, Kassem M, Hefferan TE, Sarkar G, Spelsberg TC, Riggs BL (1996) Isolation and characterization of osteoblast precursor cells from human bone marrow. *J Bone Miner Res* **11**: 312-324.
- Ringner M (2008) What is principal component analysis? *Nat Biotechnol* **26**: 303-304.
- Rozen S, Skaletsky H (2000) Primer3 on the WWW for general users and for biologist programmers. *Methods Mol Biol* **132**: 365-386.
- Sanchez C, Deberg MA, Bellahcène A, Castronovo V, Msika P, Delcour JP, Crielaard JM, Henrotin YE (2008) Phenotypic characterization of osteoblasts from the sclerotic zones of osteoarthritic subchondral bone. *Arthritis Rheum* **58**: 442-455.
- Sahrudi K, Thomas A, Braunsteiner T, Wolf H, Vécsei V, Aharinejad S (2009) VEGF serum concentrations in patients with long bone fractures: a comparison between impaired and normal fracture healing. *J Orthop Res* **27**: 1293-1297.
- Saxon LK, Galea G, Meakin L, Price J, Lanyon LE (2012) Estrogen receptors alpha and beta have different gender-dependent effects on the adaptive responses to load bearing in cancellous and cortical bone. *Endocrinology* **153**: 2254-2266.
- Shah M, Kola B, Bataveljic A, Arnett TR, Viollet B, Saxon L, Korbonits M, Chenu C (2010) AMP-activated protein kinase (AMPK) activation regulates *in vitro* bone formation and bone mass. *Bone* **47**: 309-319.
- Shea LD, Wang D, Franceschi RT, Mooney DJ (2000) Engineered bone development from a pre-osteoblast cell line on three-dimensional scaffolds. *Tissue Eng* **6**: 605-617.
- Siggelkow H, Rebenstorff K, Kurre W, Niedhart C, Engel I, Schulz H, Atkinson MJ, Hüfner M (1999) Development of the osteoblast phenotype in primary human osteoblasts in culture: comparison with rat calvarial cells in osteoblast differentiation. *J Cell Biochem* **75**: 22-35.
- Simon DWN, Clarkin CE, Das-Gupta V, Rawlinson SCF, Emery RJ, Pitsillides AA (2008) Identifying the

cellular basis for reimplantation failure in repair of the rotator cuff. *J Bone Joint Surg Br* **90**: 680-684.

Sohaskey ML, Jiang Y, Zhao JJ, Mohr A, Roemer F, Harland RM (2010) Osteopotential regulates osteoblast maturation, bone formation, and skeletal integrity in mice. *J Cell Biol* **189**: 511-525.

Solchaga LA, Cassiède P, Caplan AI (1998) Different response to osteo-inductive agents in bone marrow- and periosteum-derived cell preparations. *Acta Orthop Scand* **69**: 426-432.

De Souza RL, Matsuura M, Eckstein F, Rawlinson SCF, Lanyon LE, Pitsillides AA (2005) Non-invasive axial loading of mouse tibiae increases cortical bone formation and modifies trabecular organization: A new model to study cortical and cancellous compartments in a single loaded element. *Bone* **37**: 810-818.

Tat SK, Pelletier J-P, Lajeunesse D, Fahmi H, Duval N, Martel-Pelletier J (2008) Differential modulation of RANKL isoforms by human osteoarthritic subchondral bone osteoblasts: influence of osteotropic factors. *Bone* **43**: 284-291.

Tat SK, Pelletier J-P, Velasco CR, Padrines M, Martel-Pelletier J (2009) New perspective in osteoarthritis: the OPG and RANKL system as a potential therapeutic target? *Keio J Med* **58**: 29-40.

Taylor SEB, Shah M, Orriss IR (2014) Generation of human and rodent osteoblasts. *Bonekey Rep* **3**: 585.

Udagawa N, Takahashi N, Jimi E, Matsuizaki K, Tsurukai T, Itoh K, Nakagawa N, Yasuda H, Goto M, Tsuda E, Higashio K, Gillespie MT, Martin TJ, Suda T (1999) Osteoblasts/stromal cells stimulate osteoclast activation through expression of osteoclast differentiation factor/RANKL but not macrophage colony-stimulating factor. *Bone* **25**: 517-523.

Varanasi SS, Olstad OK, Swan DC, Sanderson P, Gautvik VT, Reppe S, Francis RM, Gautvik KM, Datta HK (2010) Skeletal site-related variation in human trabecular bone transcriptome and signaling. *PLoS One* **5**: e10692.

Verstraeten A, Van Ermen H, Haghebaert G, Nijs J, Geusens P, Dequeker J (1991) Osteoarthritis retards the development of osteoporosis. Observation of the coexistence of osteoarthritis and osteoporosis. *Clin Orthop* **264**: 169-177.

Vora SR, Palamakumbura AH, Mitsi M, Guo Y, Pischon N, Nugent MA, Trackman PC (2010) Lysyl oxidase propeptide inhibits FGF-2-induced signaling and proliferation of osteoblasts. *J Biol Chem* **285**: 7384-7393.

Wade-Gueye NM, Boudiffa M, Laroche N, Vanden-Bossche A, Fournier C, Aubin JE, Vico L, Lafage-Proust M-H, Malaval L (2010) Mice lacking bone sialoprotein (BSP) lose bone after ovariectomy and display skeletal site-specific response to intermittent PTH treatment. *Endocrinology* **151**: 5103-5113.

Wagner W, Bork S, Horn P, Kronic D, Walenda T, Diehlmann A, Benes V, Blake J, Huber F-X, Eckstein V, Boukamp P, Ho AD (2009) Aging and replicative senescence have related effects on human stem and progenitor cells. *PLoS One* **4**: 13.

Westacott CI, Webb GR, Warnock MG, Sims J V, Elson CJ (1997) Alteration of cartilage metabolism by cells from osteoarthritic bone. *Arthritis Rheum* **40**: 1282-1291.

Willie BM, Birkhold AI, Razi H, Thiele T, Aido M, Kruck B, Schill A, Checa S, Main RP, Duda GN (2013) Diminished response to *in vivo* mechanical loading in trabecular and not cortical bone in adulthood of female C57Bl/6 mice coincides with a reduction in deformation to load. *Bone* **55**: 335-346.

Wong MM, Rao LG, Ly H, Hamilton L, Tong J, Sturtridge W, McBroom R, Aubin JE, Murray TM (1990) Long-term effects of physiologic concentrations of dexamethasone on human bone-derived cells. *J Bone Miner Res* **5**: 803-813.

Xia L, Feng B, Wang P, Ding S, Liu Z, Zhou J, Yu R (2012) *In vitro* and *in vivo* studies of surface-structured implants for bone formation. *Int J Nanomedicine* **7**: 4873-4881.

Zhang W, Ou G, Hamrick M, Hill W, Borke J, Wenger K, Chutkan N, Yu J, Mi Q-S, Isales CM, Shi X-M (2008) Age-related changes in the osteogenic differentiation potential of mouse bone marrow stromal cells. *J Bone Miner Res* **23**: 1118-1128.

Discussion with Reviewer

Reviewer I: If the outcome of this study is subsequently substantiated, how would this affect the use of MSCs for therapeutic applications?

Authors: It is possible that a more complete understanding of the factors governing the diversity in behaviour in osteoblasts from different types of bone, will better inform use of MSC for therapeutic applications.

It may, for instance, allow for greater “selection” of particular bone cell behaviour, favouring formation of specific bone types at a certain location, and this allow better tailoring of MSC application to the clinical, therapeutic need. Without conducting more functional studies both *in vitro* and *in vivo* it is difficult, however, to predict how this will impact on therapeutic MSC applications. Our data may be an indication that MSC from different sites will also exhibit some diversity in genetic and functional signatures, possibly owing to their particular environmental niche. This may therefore contribute to greater selection being placed on the location for MSC harvesting.

Reviewer I: What possible mechanisms do you think are involved in osteoblast diversity? Is it modified by local niches or inherent in the development pathway?

Authors: This is an interesting question. The possible mechanisms involved in osteoblast diversity are yet to be uncovered. It is possible that both local niches and inherent differences in developmental origins and pathways are involved. If we had to make a prediction, we feel that it would be likely that osteoblast diversity would reflect a combination of both local, environmental influences and inherent pre-programming. Recent evidence indicating that at least some trabecular bone osteoblasts may be derived from hypertrophic chondrocytes of the growth plate might be interpreted as evidence that such diversity in osteoblast origins indeed exists (Yang *L et al.*, 2014; Yang *G et al.*, 2014; Zhou *et al.*, 2014). Without definitive identification

of the mechanisms and factors governing such diversity, however, it is not possible to pinpoint the answer to this fascinating question.

Reviewer II: Do the authors think that these findings would be the same in large species (ovine/bovine), small rodent species (mouse/guinea pig/rat) and in non-mammalian species?

Authors: We acknowledge that the impact of the differing human bone type-related cell attributes reported here would be modified if they were conserved in all species. Selection of both location for sampling and species would however need to be made carefully. Bone size would need to be taken into account, as obtaining sufficiently large samples from very small rodents is not trivial. Rodent bone might also be deemed inappropriate for comparison, as it is predominantly primary rather than secondary. Larger species do not necessarily simplify this choice, as bone from ovine and bovine species, although macroscopically similar to human, can have plexiform structure, with combinations of woven/lamellar organisation sandwiching vascular plexuses (Aerssens *et al.*, 1997; Manilay *et al.*, 2013; Pearce *et al.*, 2007). Different species also exhibit divergent post-natal growth, modelling and remodelling patterns and this might also translate to differences in osteoblast *in vitro*. It is nonetheless pertinent to visit how any such studies might be interpreted too. Would failure to replicate our findings in all species necessarily diminish their significance to human? Would their replication in all species offer any explanation regarding their origins? Do/

how do bone type-related differences in cell behaviour impact on physiological bone responses *in vivo*? Can they be exploited to achieve targeting of one bone site over another? There are many further questions that our findings raise and whether there are similarities (or differences) in osteoblasts isolated from similar bone types in other mammalian and non-mammalian species would be of great interest in this regard.

Additional References

Manilay Z, Novitskaya E., Sadovnikov E, McKittrick J (2013) A comparative study of young and mature bovine cortical bone. *Acta Biomater.* **9**: 5280-5288.

Pearce AI, Richards RG, Milz S, Schneider E, Pearce SG (2007) Animal models for implant biomaterial research in bone: A review. *Eur Cell Mater* **13**: 1-10.

Yang G, Zhu L, Hou N, Lan Y, Wu YM, Zhou B, Teng Y, Yang X (2014). Osteogenic fate of hypertrophic chondrocytes. *Cell Res* **24**: 1266-1269.

Yang L, Tsang KY, Tang HC, Chan D, Cheah KS (2014). Hypertrophic chondrocytes can become osteoblasts and osteocytes in endochondral bone formation. *Proc Natl Acad Sci U S A* **111**: 12097-12102.

Zhou X, von der Mark K, Henry S, Norton W, Adams H, de Crombrughe B (2014) Chondrocytes transdifferentiate into osteoblasts in endochondral bone during development, postnatal growth and fracture healing in mice. *PLoS Genet* **10**: e1004820.